

MST Magnetic Contact

Product Overview

The MST is a new addition to Elmdene's extensive range of magnetic contacts. It is a surface mounted, multi-resistor magnetic contact with terminal connections and is ideal for use in both domestic and commercial installations and single or multiple door configurations.

The MST is designed to meet the requirements of EN50131-2-6:2008 Grade 2 and Environmental Class II.

Like all Elmdene magnetic contacts, the MST is easy to install and set up with the chosen control panel. It also incorporates a number of special anti-tampering design features including unique blanking plugs to prevent interference with the lid cover screws and an anti-tamper wall around the baseplate.

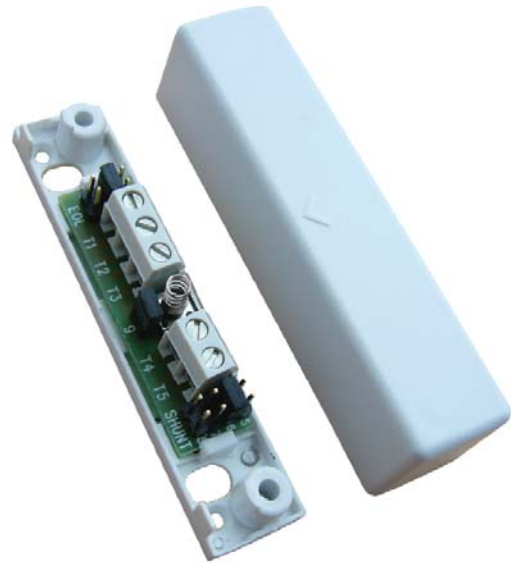
The unit is slimline and has a symmetrical rectangular shape, meaning it looks aesthetically pleasing in any orientation.

Features

- Includes blanking plugs to reduce the risk of tampering and provide a visually pleasing finish
- Single SKU provides single contact solution for a large range of control panels
- High quality jumper links for easy control panel selection (see table)
- FSL and double pole installations
- Five terminals provide full connectivity for single or multiple door installations
- Flexible cable entry points at rear, end and side
- Captive cover screws
- Sleek and symmetrical design
- Supplied with fixing screws
- Matching spacers available separately for mounting on metal or offset surfaces
- 5 year warranty

Part Numbers

| Part no | Description |
|---------|----------------------|
| MST | MST Magnetic Contact |
| MST-SPC | Spacers (pack of 10) |



MST

Technical Information

| | |
|-------------------------|---------------------------------|
| Material | Rhodium |
| Power handling | 10VA |
| Voltage rating | 100V dc, 150V ac max |
| Current rating - switch | 1.0A max |
| Current rating - carry | 1.5A max |
| Resistance | <300m Ω |
| Operating life | >1 x 10 ⁸ operations |

EOL Resistor Selection

Use the following table to select the correct Shunt and EOL resistors and corresponding link settings to match the control panel.

| Colour | Resistors | | Links | | Control Panel |
|--------|-----------|-----|-------|-----|---|
| | Shunt | EOL | Shunt | EOL | |
| Green | 1K0 | 1K0 | L8 | L4 | Honeywell |
| Yellow | 2K2 | 2K2 | L7 | L3 | Europlex |
| Grey | 4K7 | 4K7 | L6 | L2 | Aritech, HKC |
| Red | 4K7 | 2K2 | L6 | L3 | ADE, Bosch, Castle, Menvier, Pyronix, Scantronix, Texecom |
| Purple | 6K8 | 4K7 | L5 | L2 | GardTec |

Product Dimensions and Weight

L x W x D: 83mm x 19mm x 19mm
Weight: 48g

