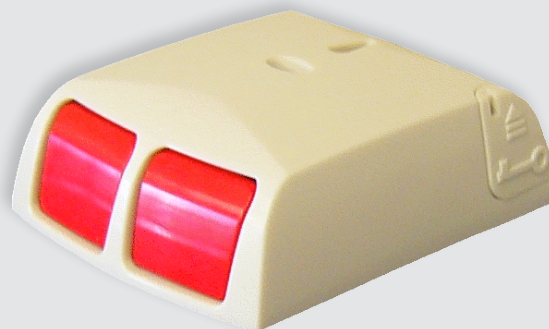


Panic Buttons

Double Push Panic Button Alarm Devices

- Grade 3
- Environmental class II
- Silent operation
- FSL and D/P connection
- Multiple control panel and resistor options
- Easy connection of multiple units
- Cover and rear tamper
- Anti-lock reset mechanism
- Independent micro switch tamper
- Metal reset key
- Selectable normally closed or open contacts
- 5 year warranty



DESCRIPTION

Elmdene panic buttons have been ergonomically designed and are ideal for use in commercial and domestic intruder installations.

Units are double push and are provided with integral resistors for use with most control panels. There is also the option for double pole connection if required. Spare terminals allow through connection for multiple units wired to one zone.

Fully compliant with «The ACPO 10 Point Plan» and all requirements under EN50131-1:2006 +A1:2009 and PD6662:2017 A1 + A2.

TECHNICAL SPECIFICATIONS

Contact Voltage Rating	30V dc
Contact Current Rating	1A (max)
Operating Temperature	-10°C to +40°C
Operating Life	> 1 x 10 ⁸ Operations



APPROVALS

UKCA | CE Mark
RoHS Compliant

ORDERING INFORMATION



PART NO
ELM-PA-G3-W

PART NO
ELM-PA-KEY

DESCRIPTION
W 62 x L 80 x H 27 mm
White finish

DESCRIPTION
Set of spare keys for the PA model