

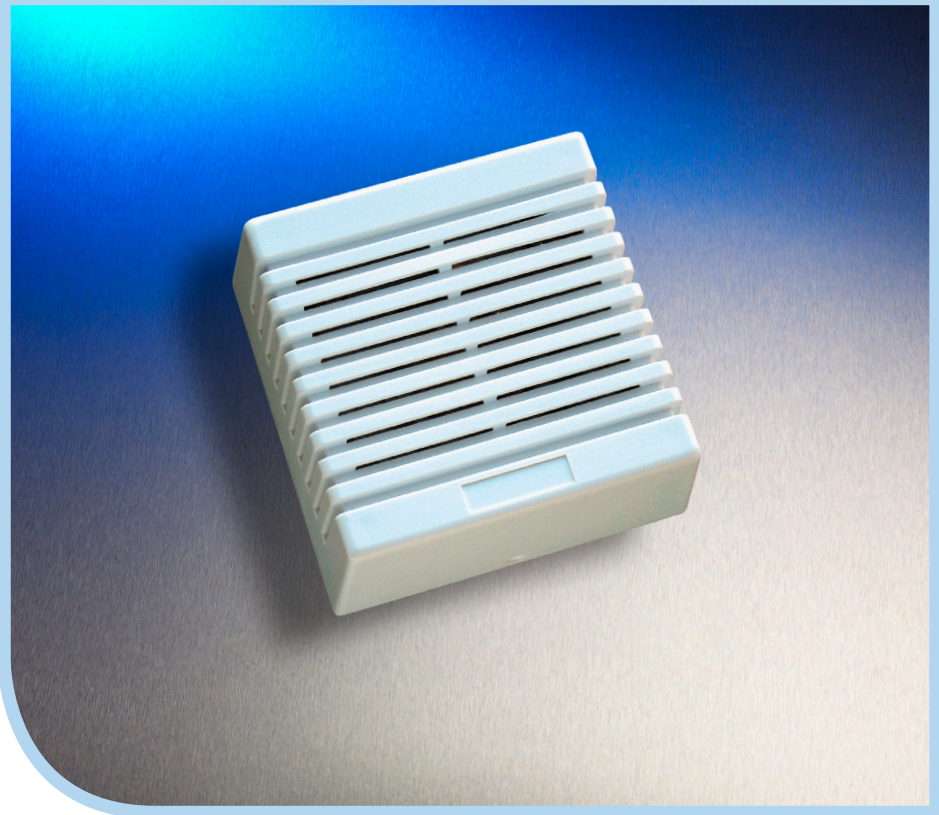
| | | | | | |
|--------------------|----------|----------------|------|------|---------|
| | Intruder | Access Control | CCTV | Fire | General |
| Extension Speakers | ● | | | | |

Overview

A range of extension speakers for use in intruder alarm systems and retail security.

Features

- 8Ω and 16Ω units available
- 20W rating
- Tampered Enclosure (16T Model)
- Polycarbonate enclosure
- 3 year warranty



Description

| Part Number | Dimensions |
|-------------|----------------------|
| TS443-16T | 110 H x 110 W x 55 D |
| TS443-16 | |
| TS443-8 | |