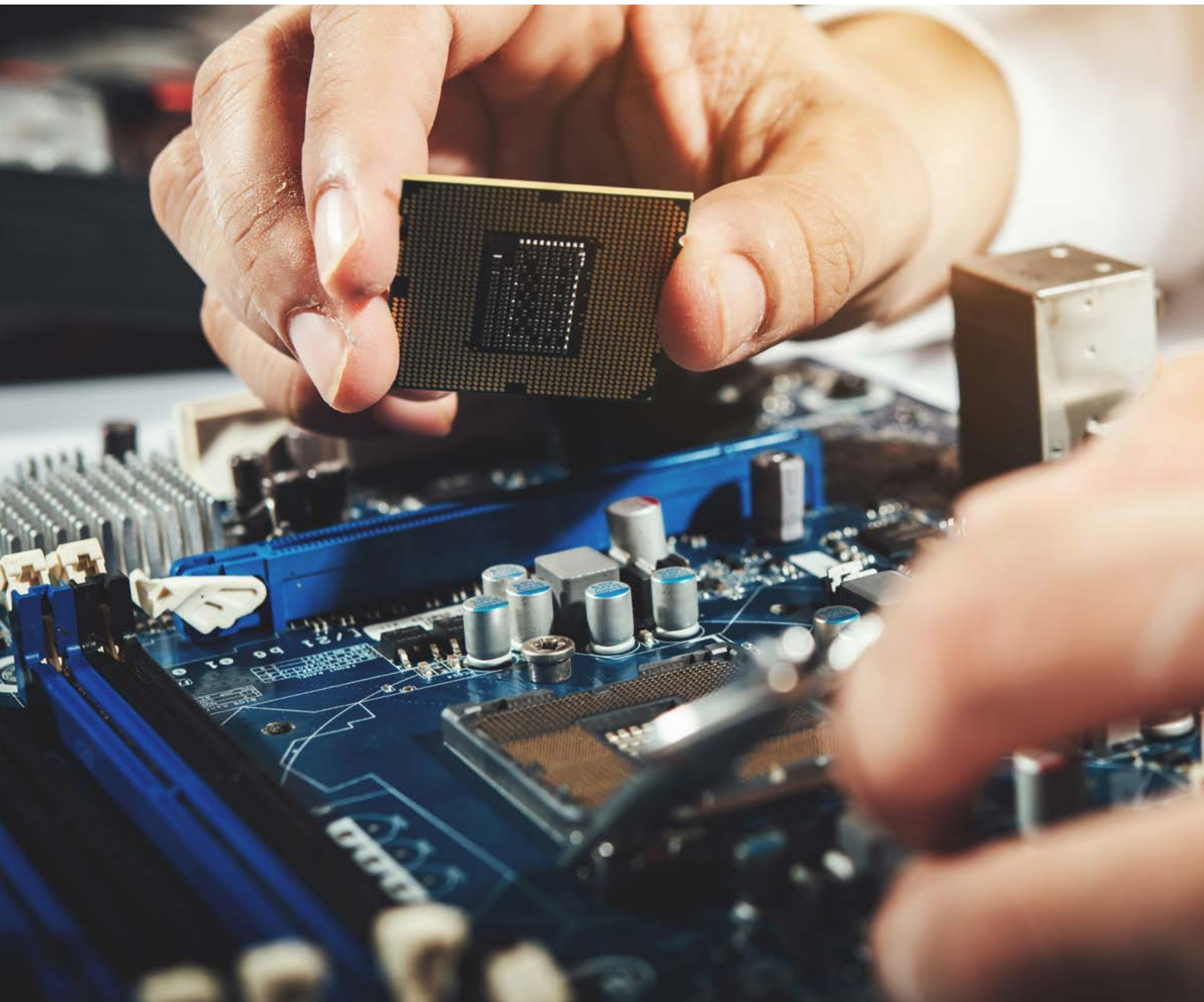


AN INDUSTRY LEADING UK BRAND

PRODUCT GUIDE

Elmdene International Limited is a world class manufacturer of electronic products for the Fire and Security Industries.



ABOUT ELMDENE INTERNATIONAL



With over **60 years** of specialist experience in designing and manufacturing fire and security products, Elmdene is the dependable choice for quality products.

Built to integrate seamlessly into an infinite variety of systems Elmdene's products, above all, deliver peace-of-mind to system integrators, manufacturers and installers.

Established in 1963, with a manufacturing plant based in Portsmouth (south coast of England), our business has been built on a philosophy that insists our products are made to the highest standards. Our range also continues to expand with the changing needs of the industry, customers and end users.

“The true proof of our quality is in the **lifetime warranty** we offer on our power supplies.”

- Elmdene International Ltd.



ONGOING SUPPORT

Elmdene has earned a great reputation from partnerships, bringing comprehensive technical knowledge, manufacturing expertise and first-class project management to each unique solution brought to market.

OUR PSU SOLUTIONS



FULL PRODUCT DEVELOPMENT PROCESS

Having vast experience with product development, Elmdene is a choice partner that manages the full process: From generating concepts, through to production and then finally - technical support.



IN-HOUSE CAPABILITIES

- In-house Design Team for Custom Branding Opportunities.
- Concept and 3D Modelling.
- Expert Advice on Bespoke Solutions and Leading Power Supply Design.
- Dedicated, Fast-Reacting Sales and Technical Support.

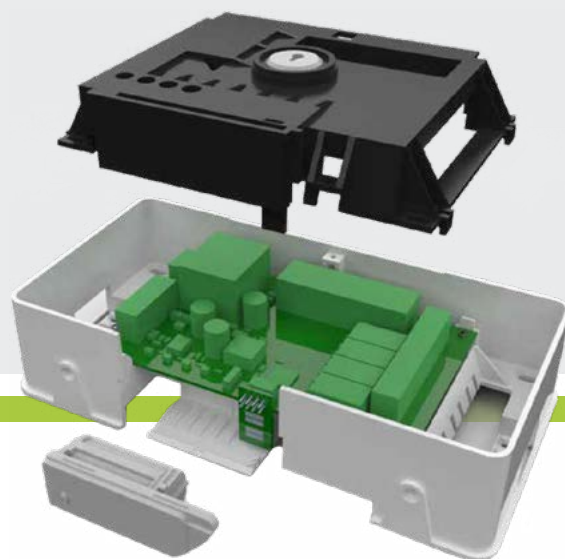
Underpinning our capabilities

- Elmdene has a Quality Management System accredited to ISO 9001:2015 and specialises in manufacturing products to quality and technical standards from across the world, including VdS, Nfa2p, INCERT, UL and Kiwa.



PRODUCTION EXPERTISE

- Mechanical Design
- Electronic Design
- Plastic Moulding
- Software Development
- Tooling Expertise



ELMDENE ACCREDITATIONS

We are accredited to BS EN9001 for our quality management system and compliant to ISO 14001 for environmental management. We work to meet the requirements of quality and technical standards around the world.

We have recently received accreditation for the below products:

- UL294 Access Control PSU Range
- EN54-4 Fire Range
- EN50131-6 (system 5) PSUs for intruder systems



GREEN CREDENTIALS

Actively seeking opportunities for environmental friendliness is a key duty for us. We build energy efficiency into our products as much as possible, both from an environmental responsibility perspective, and a cost and longevity perspective.

Our switch mode power supply units are typically 80-87% efficient. This is a significant difference that can help save your customer money while helping them meet their own green commitments.

We are committed to living up to our green philosophy, and as a result, we are compliant to **ISO 14001** as well as the **WEEE (2012/19/EU)** and **RoHS (2011/65/EC)** EU Environmental Directives.

For more information click [here](#).



Switch Mode
Technology



ELMDENE PRODUCT RANGE OVERVIEW



General

Power Supplies

12V G Range N Series (Unmonitored).....	09
12V G Range BM Series (Monitored).....	10
24V G Range N Series (Unmonitored).....	11
24V G Range BM Series (Monitored).....	12
12-24V Switchable Range.....	13

Ancillaries

Fused Output Modules.....	14
Accessories	15



Fire

Power Supplies

24V EN54-4 STX Range.....	18
24V EN54-4 & EN12101-10 ST Range.....	19
24V Door Retainer Power Supply Range.....	20



Access Control

Power Supplies

ACCESS-PSU Range.....	23
ACCESS-UL-PSU Range.....	24
PoE Ultrapod™.....	25
Universal Enclosure.....	26

Ancillaries

Touchless Exit Button.....	27
----------------------------	----



Intruder

Power Supplies

12V GEN EN50131-6 Approved Range.....	30
---------------------------------------	----

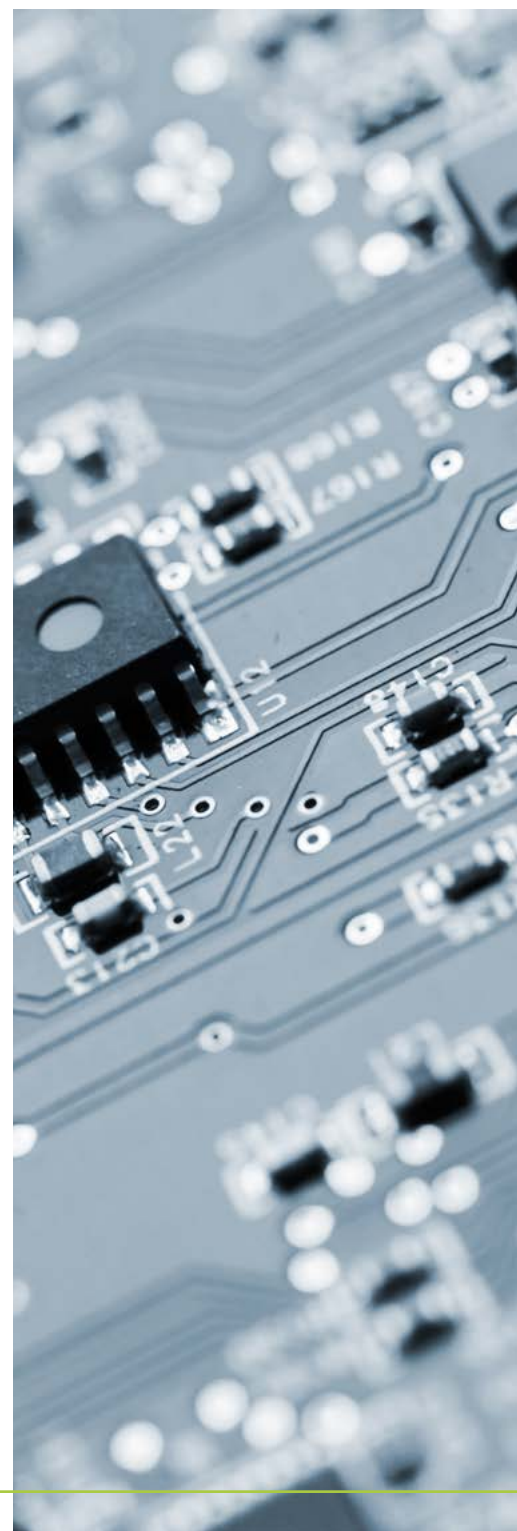


Power Supplies with Integrated Lithium Batteries

Li-Power EN50131-6 Compliant Range.....	31
---	----

Ancillaries

Rapier External Sounder.....	32
Internal Sounder Range.....	33
Magnetic Contacts.....	34
Junction Boxes.....	35
Panic Buttons.....	36
Safe Limpets.....	36
A4 Document Boxes.....	37



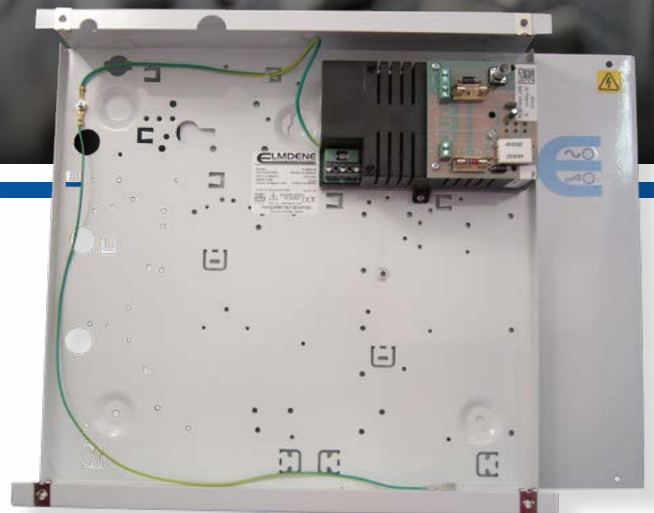
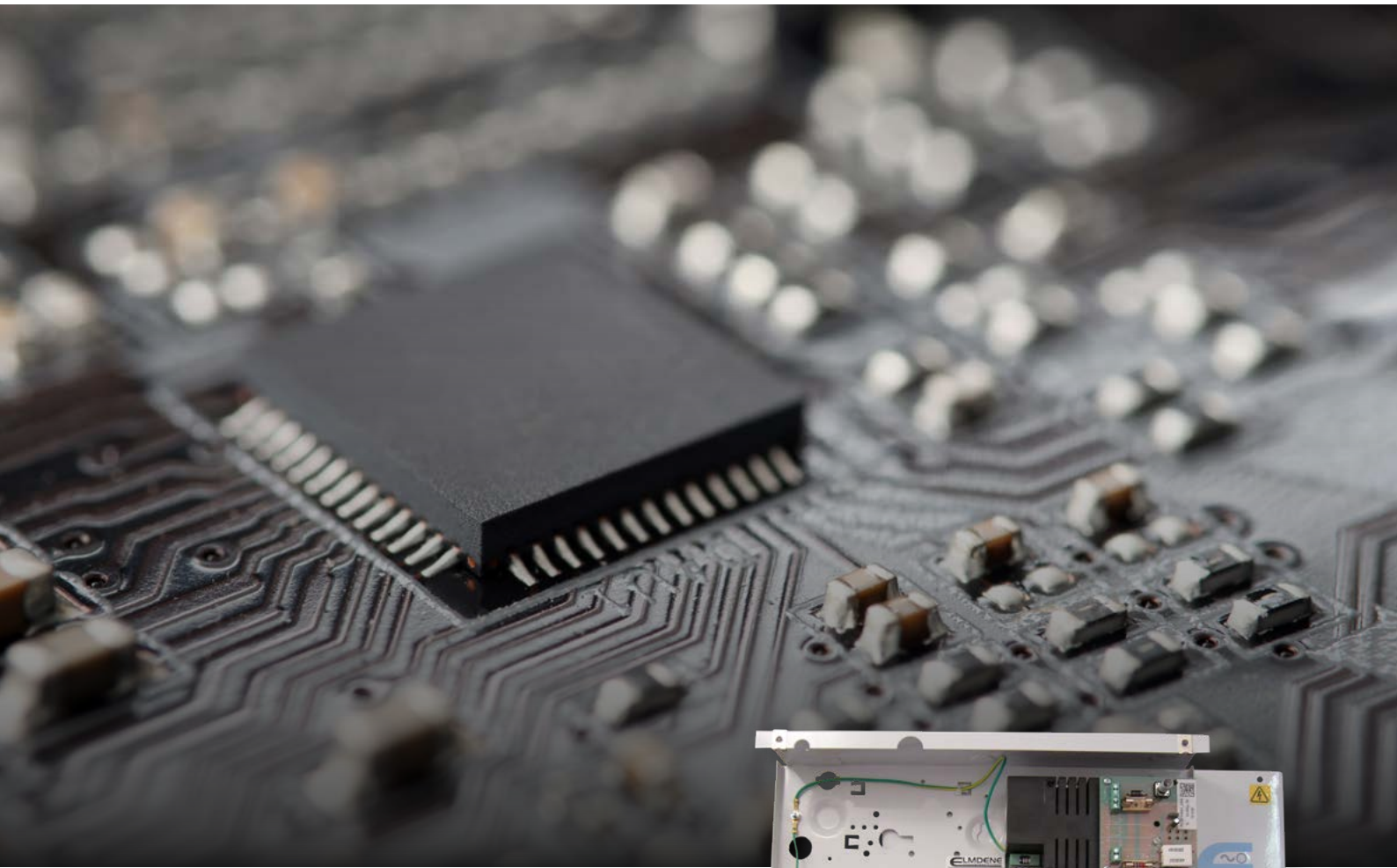
POWER SUPPLY ENCLOSURES

A range of box sizes is available for Elmdene power supplies. Use the table below to identify the box size for your application.

- As standard, boxed power supplies are made from powder coated steel and finished in white
- Unboxed modules can be lug or DIN rail mounted
- All unboxed 12V models are DIN Rail Mountable

Box Reference	Dimensions (mm)	Enclosure Type	Lid Type
A	200 H x 230 W x 80 D	Powder Coated Steel	Hinge
B	330 H x 355 W x 80 D		Clam
B2	330H x 377W x 85D		Hinge
C	275 H x 330 W x 80 D		Hinge
D	500 H x 400 W x 80 D		
E	420 H x 400 W x 80 D		
G	440 H x 250 W x 115 D		
H	420 H x 420 W x 180 D		
J	185 H x 200 W x 53 D		
K	325 H x 350 W x 105 D		
R	410 H X 390 W x 86 D	Powder Coated Steel	Clam
T	300 H x 240 W x 60 D		Hinge
V	515 H x 478 W x 146 D		

STANDBY POWER FOR GENERAL APPLICATIONS



SECURITY POWER SUPPLIES PRODUCT RANGE



			12V G range N	12V G range BM	Switchable range	24V G range N	24V G range BM
Output Voltage	12V dc	13.8Vdc output for 12V devices	•	•	•		
	24V dc	27.6Vdc output for 24V devices			•	•	•
Input Voltage	110VAC		•	•	•	•	•
	240VAC		•	•	•	•	•
Output Current	1A	Maximum rated load current	•	•	•	•	•
	2A	Maximum rated load current	•	•	•	•	•
	3A	Maximum rated load current	•	•	•	•	•
	4A	Maximum rated load current	•	•	•	•	•
	5A	Maximum rated load current	•	•	•	•	•
	8A	Maximum rated load current			•		
	10A	Maximum rated load current		•			•
Features	SLA Battery Charging	On-board battery charging for emergency backup lead-acid batteries	•	•	•	•	•
	Lid Tamper	Signal to warn lid has been opened	•	•	•		
	Wall Tamper	Signal to warn PSU has been removed from wall		•	•		
	Low battery warning	Signal when battery voltage becomes low		•			•
	Mains fail warning	Signal to warn mains power as been lost		•	•		•
	PSU Fault warning	Signal to warn the PSU has an internal fault		•			•
	Battery Fault warning	Signal to warn the battery has a fault		•			•
	Battery deep discharge protection	Low battery cut-off, which prolongs the life of battery		•			•
	LED indication	Visual identification on PSU lid	•	•	•	•	•
	12/24V switchable outputs	Output can be switched from 12V to 24V via manual switch	◦	◦		◦	◦
	Multiple fused outputs (glass fuse) - options	Multiple fused outputs enable multiple devices to be powered, with glass fuse protection			•		
	Independent ancillary relay	A separate relay that can be used to signal or trigger independent events	•	•	•	•	•
Mounting options	Steel enclosure (white)	Enclosure for PSU and battery is made from steel	•	•		◦	◦
	DIN rail fixing / module only	Power module is able to fix to standard DIN rail for custom installations	•	•	•	•	•
	Lifetime Warranty	Standard warranty for Elmdene PSUs	•	•	•	•	•
	Operating Temp -10 to +40oC	PSU will operate to full load within these temperatures	•	•	•	•	•
Product Standards	CE/UKCA compliant	Minimal requirement for electronic products within UK and EU	•	•	•	•	•
Typical Application	General Purpose		•	•	•	•	•
	Access Control		•	•	•	•	•
	CCTV		•	•	•	•	•

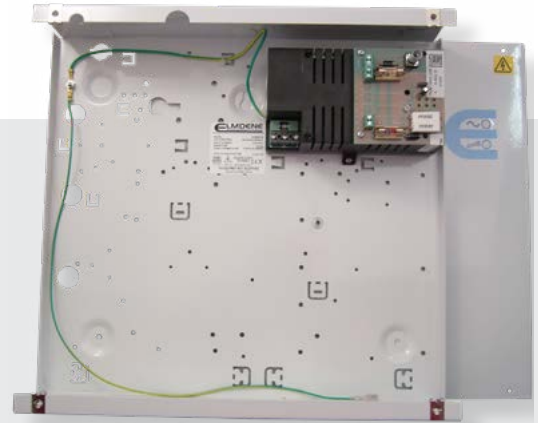
• = Included / ◦ = Optional

12V G RANGE N SERIES (UNMONITORED)

OVERVIEW

This range has a regulated highly stable output supplying full rated current to load, plus additional battery charge and a universal mains voltage input charging (90 to 264V ac).

**Also suitable for Access Control
and Intruder systems**



Switch Mode
Technology

FEATURES

- 13.8V dc output
- Full rated current to load + 0.5A battery charging
- Modular construction means easy maintenance and upgrading
- Cost effective switch mode
- Front tamper protection
- Energy efficient
- Available boxed or PSU module only
- Battery leads included with unboxed models

[Find out more](#)

If you're looking for more personalised advice, don't hesitate to reach out to one of our experts and we'll be happy to assist.

[Speak to one of our experts](#)

Part Number	Amp Rating	Dimensions	Will Fit Battery Size
G13801N-A	1.0	200 H x 230 W x 80 D	1 x 7Ah
G13802N-A	2.0	200 H x 230 W x 80 D	1 x 7Ah
G13802N-B		330 H x 355 W x 80 D	1 x 17Ah
G13802N-C		275 H x 330 W x 80 D	
G13803N-A	3.0	200 H x 230 W x 80 D	1 x 7Ah
G13803N-B		330 H x 355 W x 80 D	1 x 17Ah
G13803N-C		275 H x 330 W x 80 D	
G13804N-B	4.0	330 H x 355 W x 80 D	
G13804N-C		275 H x 330 W x 80 D	
G13804N-4-C	4 x 1A		
G13805N-B	5.0	330 H x 355 W x 80 D	
G13805N-C		275 H x 330 W x 80 D	
Part Number	Amp Rating	Description	Dimensions
G13802NU	2.0	Unboxed DIN RAIL Mountable (Battery leads included)	134 L x 84 W x 42 H
G13803NU	3.0		152 L x 106 W x 71 H
G13804NU-4	4 x 1.0		
G13805NU	5.0		

12V G RANGE BM SERIES (MONITORED)

OVERVIEW

Ideal for applications requiring mains and battery monitoring with fault outputs in addition to battery deep discharge protection.

Also suitable for Access Control and Intruder systems



Switch Mode
Technology

FEATURES

- 13.8V dc output
- Full rated current to load + 0.5A battery charging
- Mains and battery monitoring
2x Volt free fault outputs
- Low battery warning
- Battery deep discharge protection
- Front and rear tamper protection
- Battery leads included with unboxed models

[Find out more](#)

If you're looking for more personalised advice, don't hesitate to reach out to one of our experts and we'll be happy to assist.

[Speak to one of our experts](#)

Part Number	Amp Rating	Dimensions	Will Fit Battery Size
G13802BM-A	2.0	200 H x 230 W x 80 D	1 x 7Ah
G13802BM-C		275 H x 330 W x 80 D	1 x 17Ah
G13803BM-B	3.0	330 H x 355 W x 80 D	
G13804BM-B	4.0	330 H x 355 W x 80 D	
G13804BM-C		275 H x 330 W x 80 D	
G13804BM-4-B	4 x 1A	330 H x 355 W x 80 D	
G13805BM-B	5.0	330 H x 355 W x 80 D	
G13805BM-C		275 H x 330 W x 80 D	
G13810BM-8-C	10 x 1A	275 H x 330 W x 80 D	2 x 7Ah
G13810BM-8-R		410 H x 390 W x 86 D	2 x 17Ah
Part Number	Amp Rating	Description	Dimensions
G13802BMU	2.0	Unboxed DIN RAIL (Battery leads included)	152 x 106 x 52
G13803BMU	3.0		152 x 106 x 71
G13805BMU	5.0		



24V G RANGE N SERIES (UNMONITORED)

OVERVIEW

Standard range of 24V dc power supplies with closely regulated output and universal mains input designed for general purpose applications.



Switch Mode
Technology

FEATURES

- 27.6V dc output
- Full rated current to load + 0.5A battery charging
- Boxed and un-boxed versions
- Electronic overload protection
- Universal mains input
- DIN rail mount option 1A & 2A models
- Battery leads included with unboxed models

[Find out more](#)

Part Number	Amp Rating	Dimensions	Will Fit Battery Size
G2401N-C	1.0	275 H x 330 W x 80 D	2 x 12V 7Ah
G2402N-C	2.0	275 H x 330 W x 80 D	2 x 12V 7Ah
G2403N-C	3.0	275 H x 330 W x 80 D	2 x 12V 7Ah
G2405N-C	5.0	275 H x 330 W x 80 D	2 x 12V 7Ah
G2405N-R		410 H X 390 W x 86 D	2 x 12V 17Ah
Part Number	Amp Rating	Description	Dimensions
G2402NU	2.0	Unboxed DIN RAIL (Battery leads included)	152 x 106 x 71
G2403NU	3.0	Unboxed DIN RAIL (Battery leads included)	152 x 106 x 71
G2405NU	5.0		157 x 143 x 55

If you're looking for more personalised advice, don't hesitate to reach out to one of our experts and we'll be happy to assist.

[Speak to one of our experts](#)

24V G RANGE BM SERIES (MONITORED)

OVERVIEW

Ideal for applications requiring mains and battery monitoring with fault outputs in addition to battery deep discharge protection.



Switch Mode
Technology

FEATURES

- 27.6V dc output
- Full rated current to load + 0.5A battery charging
- Mains and battery monitoring
- Low battery warning
- 2x Volt free fault outputs
- Battery deep discharge protection
- Boxed and unboxed versions
- Battery leads included with unboxed models

[Find out more](#)

If you're looking for more personalised advice, don't hesitate to reach out to one of our experts and we'll be happy to assist.

[Speak to one of our experts](#)

Part Number	Amp Rating	Dimensions	Will Fit Battery Size
G2401BM-C	1.0	275 H x 330 W x 80 D	2 x 12V 7Ah
G2402BM-C	2.0	275 H x 330 W x 80 D	2 x 12V 7Ah
G2403BM-C	3.0	275 H x 330 W x 80 D	2 x 12V 7Ah
G2405BM-C	5.0	275 H x 330 W x 80 D	2 x 12V 7Ah
G2405BM-R		410 H x 390 W x 86 D	2 x 12V 17Ah
G2405BM-H		420 H x 420 W x 180 D	2 x 12V 38Ah
G2410BM-E	10.0	420 H x 400 W x 80 D	2 x 12V 17Ah
Part Number	Amp Rating	Description	Dimensions
G2402BMU	2.0	Unboxed DIN RAIL (Battery leads included)	152 x 106 x 71
G2403BMU	3.0		152 x 106 x 71
G2405BMU	5.0	Unboxed (Battery leads included)	157 x 143 x 55
G2410BMU	10.0		245 x 135 x 60

12-24V SWITCHABLE RANGE



OVERVIEW

A range of power supplies featuring a selectable 12V / 24V dc output to suit your required application.



Switch Mode
Technology

FEATURES

- Output selectable between 12V and 24V dc
- 4A/2A, 6A/3A, 8A/4A options at 12V/24V dc
- 7Ah or 17Ah battery options
- Mains fail relay fault output
- Independent ancillary relay
- Tamper protection

[Find out more](#)

Part Number	Amp Rating 13.8V/27.6V	Fused Out-puts	Dimensions	Will Fit Battery Size
G1224-42N-C	4A / 2A	1	275 H x 330 W x 80 D	12V Mode: 1 x 12V 7Ah 24V Mode: 2 x 12V 7Ah
G1224-63N-C	6A / 3A			
G1224-84N-C	8A / 4A	1		
G1224-84N-4-C		4		
G1224-84N-8-C		8		
G1224-84N-R	8A / 4A	1	410 H x 390 W x 86 D	12V Mode: 1 x 12V 17Ah 24V Mode: 2 x 12V 17Ah
G1224-84N-H	8A / 4A	1	420 H x 420 W x 180 D	24V Mode: 2 x 12V 38Ah
Part Number	Amp Rating 13.8V/27.6V	Fused Out-puts	Description	Will Fit Battery Size
G1224-42NU	4A / 2A	1	Unboxed	157 x 143 x 55
G1224-63NU	6A / 3A			
G1224-84NU	8A / 4A			

If you're looking for more personalised advice, don't hesitate to reach out to one of our experts and we'll be happy to assist.

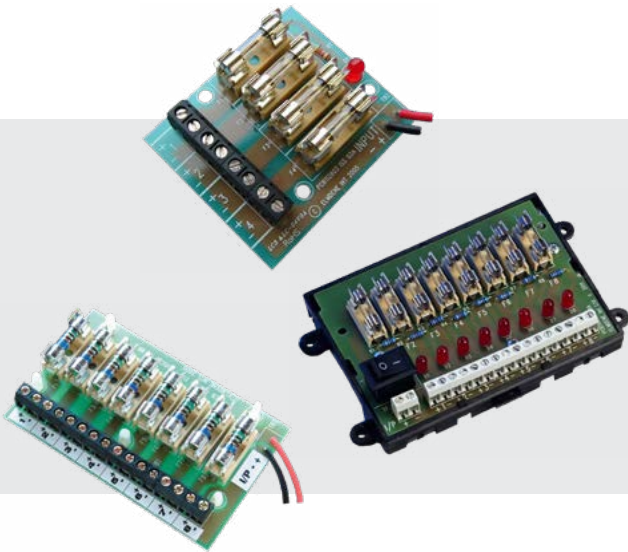
[Speak to one of our experts](#)

FUSED OUTPUT MODULES

OVERVIEW

These fused output modules can be used to provide 4 or 8 individually fused outputs from a single PSU output.

[Find out more](#)



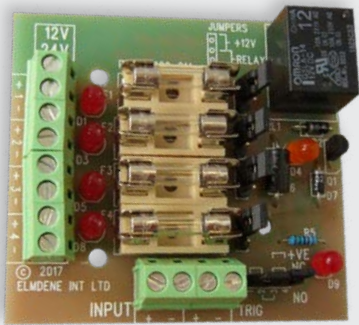
FEATURES

- 4 or 8 individually fused outputs
- Health indicator
- Individual health LEDs and PTC options on request
- Ideal for CCTV and Access Control applications
- DIN rail version
- 3 year warranty

Part Number	Dimensions
FOM-4	60 L x 50 W x 33 D
FOM-8	94 L x 66 W x 33 D
FOM8-DIN	134 L x 84 W x 35 D

FIRE FOM RELAYS

This range provides independent fused outputs which can be controlled by means of either a Volt Free contact (N/O or N/C) or a low voltage signal (12V dc), such as a fire alarm panel output.



FEATURES

- Multiple Trigger configurations
- Contact rating: 10A @ 12Vdc
- Each output selectable for switched or permanently on

Part Number	Dimensions
FIREFOM-12-4	4 way 12V Fire Relay
FIREFOM-12-8	8 way 12V Fire Relay
FIREFOM-12-12	12 way 12V Fire Relay

ACCESSORIES

OVERVIEW

A range of accessories that can be added to any PSU, for specific installation requirements.



MAINS FAIL RELAY

- To provide Mains Fail indication using a volt-free relay contact
- N/C (Fail safe) operation & monitoring
- Supplied with PCB standoffs
- Ideal for use with Power Supplies where mains fail signalling is required

Part Number	Description	Dimensions
MFR-1	230Vac Mains Fail Relay	60 L x 50 W x 33 D

[Find out more](#)

MULTI PURPOSE RELAYS

- Provides two sets of relay changeover contacts
- Low current consumption
- Supplied with sticky feet for fixing

Part Number	Voltage	Dimensions
MPR001	12V	72 L x 26 W x 20 D
MPR002	24V	

[Find out more](#)

REGULATOR MODULE

- Regulator board with selectable output voltage 12V or 24Vdc (by onboard jumper)
- Nominal Output 24Vdc +/- 5% at 2A (max)
 - Input range : 23Vdc - 28Vdc
- Nominal Output 12Vdc +/- 5% at 4A (max)
 - Input range : 12Vdc - 28Vdc

Part Number	Dimensions
REG1224-MOD	55 L x 42 W x 30 D

[Find out more](#)

FIRE & AOV SOLUTIONS



FIRE POWER SUPPLIES



			STX range	ST range	TR range
Output Voltage	24V dc	27.6Vdc output for 24V devices	●	●	●
Input Voltage	110VAC		●		
	240VAC		●	●	●
Output Current	1A	Maximum rated load current	●	●	●
	2A	Maximum rated load current	●	●	●
	3A	Maximum rated load current	●	●	●
	4A	Maximum rated load current	●	●	●
	5A	Maximum rated load current	●	●	
	8A	Maximum rated load current	●		
	10A	Maximum rated load current	●		
Features	SLA Battery Charging	On-board battery charging for emergency backup lead-acid batteries	●	●	
	Low battery warning	Signal to warn battery voltage level is getting low	●	●	
	Mains fail warning	Signal to warn mains power as been lost	●	●	
	PSU Fault warning	Signal to warn the PSU has an internal fault	●	●	
	Battery Fault warning	Signal to warn the battery has a fault	●	●	
	Battery deep discharge protection	Low battery cut-off, which prolongs the life of battery	●	●	
	LED indication	Visual identification on PSU lid	●	●	●
	Multiple fused outputs (glass fuse) - options	Multiple fused outputs enable multiple devices to be powered, with glass fuse protection		●	
Mounting options	Remote control of output/Fire Alarm interface	Enables a fire alarm signal to remotely operate the PSU output (on/off)			●
	Steel enclosure (white)	Enclosure for PSU and battery is made from steel	●	●	●
	DIN rail fixing / module only	Power module is able to fix to standard DIN rail for custom installations	○	○	
	Lifetime Warranty	Standard warranty for Elmdene PSUs	●	●	●
Product Standards	Operating Temp -10 to +40oC	PSU will operate to full load within these temperatures	●	●	●
	CE/UKCA compliant	Minimal requirement for electronic products within UK and EU	●	●	●
	UL approved	UL approval needed for USA, South America and Middle East markets	UL-EU		
	VDS approved	German approval body		●	
	EN54-4 approved (CPR)	Mandatory requirement for fire power supplies	●	●	
	EN12101-10 approved (CPR)	Mandatory requirement for AOV (Automatic Opening Vent) power supplies		●	
	System Level 5 approved (FPC)	Extra approval for Factory (Spain market)	●	●	
	BS7273 compliant (door retainer)	Fire door retainer installation guidance - meets the needs of			●
Application	Fire	Fire door retainer installation guidance - meets the needs of	●	●	
	AOV			●	
	Door Retainer				●

● = Included / ○ = Optional

FIRE

24V STX RANGE EN54-4 APPROVED



Switch Mode
Technology



OVERVIEW

This range of switch mode power supplies has been designed and is certified for fire systems to **EN54-4:1997, A1:2002 & A2:2006**.



FEATURES

- 27.6V dc output
- Intelligent battery charging and monitoring - utilises Elmdene Eco-Charge technology
- Remote fault signalling
- Full rated current to load plus additional current for battery charging
- Serial communication available for OEM applications on request

[Find out more](#)

Part Number	Amp Rating	Dimensions	Will Fit Battery Size
STX2401-T	1.0	300 H x 240 W x 60 D	2 x 12V 1.2Ah
STX2401-C		275 H x 330 W x 80 D	2 x 12V 7Ah
STX2402-C	2.0	420 H x 400 W x 80 D	2 x 12V 17Ah
STX2402-E		420 H x 400 W x 80 D	2 x 12V 17Ah
STX2405-C	5.0	275 H x 330 W x 80 D	2 x 12V 7Ah
STX2405-E		420 H x 400 W x 80 D	2 x 12V 17Ah
STX2410-E	10.0	420 H x 420 W x 180 D	2 x 12V 38Ah
STX2410-H	8.0	420 H x 420 W x 180 D	2 x 12V 38Ah
STX2410-E + BATT-BOX-65-BLACK	7.2	420 H x 400 W x 80 D	2 x 12V 65Ah
	N/A	534 H x 465 W x 267 D	



Approvals & Certification

STX certified by UL to:
EN54-4:1997, A1:2002, A2:2006



If you're looking for more
personalised advice, don't hesitate
to reach out to one of our experts
and we'll be happy to assist.

[Speak to one of our experts](#)

24V EN54-4 ST RANGE



Switch Mode
Technology

VdS

OVERVIEW

A range of power supplies specifically designed for fire alarm systems and certified by VDS (VdS 2541) to EN54-4 and for AOV systems to EN12101-10 by AFNOR.



FEATURES

- 1A, 2A and 5A versions
- 7Ah, 12Ah, 24Ah, 38Ah, 65Ah battery options
- Exterior Engineers Diagnostic LED, allowing for faster system diagnosis
- Dual outputs allow for compliant remote installation, from control panel (Dual Path) or used as two independent monitored outputs.
- Additional battery box available for 5A models

[Find out more](#)

Part Number	Amp Rating	Dimensions	Will Fit Battery Size
2401ST-C	1.0	275 H x 330 W x 80 D	2 x 12V 7Ah
2402ST-C	2.0	275 H x 330 W x 80 D	
2402ST-E		420 H x 400 W x 80 D	2 x 12V 17Ah / 18Ah
2402ST-K		325 H x 350 W x 105 D	2 x 12V 12Ah
2402ST-H		420 H x 420 W x 180 D	2 x 12V 24Ah / 38Ah
2405ST-C	5.0	275 H x 330 W x 80 D	2 x 12V 7Ah
2405ST-E		420 H x 400 W x 80 D	2 x 12V 17Ah
2405ST-K		325 H x 350 W x 105 D	2 x 12V 12Ah
2405ST-H		420 H x 420 W x 180 D	2 x 12V 24Ah / 38Ah
BATT-BOX-65-BLACK	N/A	534 H x 465 W x 267 D	2 x 12V 65Ah



Approvals & Certification

EN54-4/ A2 -

"Fire detection and Alarm Systems":
Certified by VDS

EN12101-10 -

"Smoke and Heat control systems":
Certified by AFNOR

If you're looking for more personalised advice, don't hesitate to reach out to one of our experts and we'll be happy to assist.

[Speak to one of our experts](#)



24V DOOR RETAINER POWER SUPPLY RANGE



OVERVIEW

Designed for fire and access control applications that require control of the power supply output. For example, to power door retainers, with a link to the fire panel in order to switch off the output to the doors in the event of a fire alarm activation. All models are configurable for Fail Safe operation, complying to BS7273.

FEATURES

- 27V dc nominal output
- Remote control of output
- **Choice of switching options:**
 - Closing of a normally open Volt-free contact
 - Opening of a normally closed Volt-free contact
 - Removal of an external 24V dc supply
- BS7273 Compliant
- Mains transient protection

Part Number	Amp Rating	Dimensions
TRS1	1.0	185 H x 200 W x 53 D

Note: This range is not suitable for use with standby batteries.

Part Number	Amp Rating	Dimensions
TR2	2.0	200 H x 230 W x 80 D
TR4	4.0	

[Find out more](#)

If you're looking for more personalised advice, don't hesitate to reach out to one of our experts and we'll be happy to assist.

[Speak to one of our experts](#)

SOLUTIONS COMPATIBLE WITH **MAJOR ACCESS CONTROL SYSTEMS**



ACCESS CONTROL POWER SUPPLIES



			ACCESS range	ACCESS UL range	POE- ULTRAPOD
Output Voltage	12V dc	13.8Vdc output for 12V devices	●	●	●
Input Voltage	110VAC		●	●	
	240VAC		●	●	
	PoE				●
Output Current	1A	Maximum rated load current	●	●	●
	2A	Maximum rated load current	●	●	●
	3A	Maximum rated load current	●	●	●
	4A	Maximum rated load current	●	●	
	5A	Maximum rated load current	●	●	
	8A	Maximum rated load current	●	●	
Features	SLA Battery Charging	On-board battery charging for emergency backup lead-acid batteries	●	●	●
	Lid Tamper	Signal to warn lid has been opened	●	●	●
	Wall Tamper	Signal to warn PSU has been removed from wall	●	●	
	Low battery warning	Signal when battery voltage becomes low	○	○	●
	Mains fail warning	Signal to warn mains power as been lost	○	○	●
	Battery deep discharge protection	Low battery cut-off, which prolongs the life of battery	○	○	●
	LED indication	Visual identificaiton on PSU lid	●	●	●
	Mounting Holes for Access controllers	Enables correct fitment of various access controllers	●	●	●
	12/24V switchable outputs	Output can be switched from 12V to 24V via manual switch	○	○	
	Multiple fused outputs (glass fuse) - options	Multiple fused outputs enable multiple devices to be powered, with glass fuse protetion	○		
	Multiple fused outputs (PTC fuse)	Multiple fused outputs enable multiple devices to be powered, with self-resetting fuse protection		●	
	Independant ancillary relay	A separate relay that can be used to signal or trigger independent events	○	○	
	Remote control of output/Fire Alarm interface	Enables a fire alarm signal to remotely operate the PSU output (on/off)		●	
Mounting options	Lockable enclosure	Uses key and lock to secure enclosure lid	○	○	
	Steel enclosure (white)	Enclosure for PSU and battery is made from steel	●	●	●
	DIN rail fixing / module only	Power module is able to fix to standard DIN rail for custom installations			○
	Lifetime Warranty	Standard warranty for Elmdene PSUs	●	●	
	Operating Temp -10 to +40oC	PSU will operate to full load within these temperatures	●	●	●
Product Standards	CE/UKCA compliant	Minimal requirement for electronic products within UK and EU	●	●	●
	UL approved	UL approval needed for USA, South America and Middle East markets		UL294	
	FCC compliant	EMC compliance for US market			●
Typical Application	General Purpose				●
	Access Control		●	●	●
	CCTV				●

● = Included / ○ = Optional



ACCESS-PSU RANGE



Switch Mode
Technology

Features

- 13.8V dc output
- Compact, single and multi-controller enclosures
- PCB mounts supplied for common controllers
- Mains fail fault output (excluding ACCESS-PSU-N)
- Tamper protection
- Switchable 12V / 24V dc versions available
- Universal 90 to 264V ac mains input range
- Bespoke models and branding available



[Find out more](#)

Part No	Description	Max. Battery Size	Controller Options	Number of Controllers
ACCESS-PSU-N	13.8Vdc 2A N-Range SMPSU 275H x 330W x 80D (mm), 3.3kg	12V 17Ah	PAXTON; SALTO	1
ACCESS-PSU	13.8Vdc 2A BM SMPSU 275H x 330W x 80D (mm), 3.3kg	12V 7Ah	NEDAP; PAXTON; SALTO*; ADI HUB PRO; CDVI; HONEYWELL IB2 I/O	1
ACCESS-PSU1	13.8Vdc 4A BM SMPSU, 4-way Fused Output Module 330H x 377W x 85D, 4.0kg	12V 7Ah	NEDAP; PAXTON	2
			ADI HUB PRO; CDVI; HONEYWELL IB2 I/O	1
ACCESS-PSU2	13.8Vdc 4A BM SMPSU 4-way Fused Output Modules 500H x 400W x 80D (mm), 6.1kg	12V 17Ah	SALTO; ADI HUB PRO; HONEYWELL IB2 I/O HONEYWELL PRO22R2/ PRO32R2	2
			NEDAP	3
			PAXTON*	4
ACCESS-PSU2-8A	13.8Vdc 8A / 27.6Vdc 4A Switchable SMPSU 4-way Fused Output Modules 500H x 400W x 80D (mm), 6.4kg	12V 17Ah	SALTO; ADI HUB PRO; HONEYWELL IB2 I/O HONEYWELL PRO22R2/ PRO32R2	2
			NEDAP	3
			PAXTON*	4
MULTI-ACCESS-PSU2	13.8Vdc 8A / 27.6Vdc 4A Switchable SMPSU 8-way Fused Output Modules 515H x 478W x 146D (mm), 10.5kg	12V 17Ah	Please contact Elmdene for further information.	
ACCESS-EXP-PLATE	Single Expander Plate for the above (2 max)	12V 17Ah		
MULTI-ACCESS-PSU6	13.8Vdc 8A / 27.6Vdc 4A Switchable SMPSU 8-way Fused Output Modules 515H x 478W x 146D (mm), 11.5kg	12V 17Ah		

*Removal of "adaptor" plate required



ACCESS-UL-PSU RANGE



Switch Mode
Technology



Designed for compatibility with most common access control door controllers, our UL294 certified access control PSU range offers incredible installation flexibility and time saving for system designers.

Enclosures are engineered to accommodate multiple door controllers for power integration within access control systems - for robust power management to ensure seamless operation.

Features

- Certified to UL294
- Compact, multi-controller enclosures
- PCB mounts for common controllers
- Unique enclosure design
- Front & rear enclosure tamper
- Mains Fail relay output
- Independent ancillary relay (8A version)
- Full rated current to load + 0.5A battery charging
- LED Fault indication



[Find out more](#)

Part No	Description	Max. Battery Size	Controller Options	Qty
ACCESS-UL-PSU1	13.8Vdc 4A BM SMPSU 4-way Fused Output Modules, 440H x 250W x 115D (mm), 4.5kg	12V 7Ah	Mercury Security: EP2500; EP1502; EP4502; MR52; MR16IN; MR16OUT	1
			Mercury Security: EP1501; MR51e; MR50 ProWatch (Honeywell): PW6101	2
ACCESS-UL-PSU2	13.8Vdc 4A BM SMPSU 4-way Fused Output Modules, 505H x 407W x 80D (mm), 7.5kg	12V 17Ah	Mercury Security: EP2500; EP1502; EP4502; MR52; MR16IN; MR16OUT; MR50	2
			Mercury Security: EP1501; MR51e ProWatch (Honeywell): PW6101	4
MULTI-ACCESS-UL-PSU6	13.8Vdc 8A SMPSU, 8-way Fused Output Modules 515H x 478W x 146D (mm), 11.5kg	12V 17Ah	Mercury Security: EP2500; EP1502 ; EP4502 ; MR52 ; MR16IN ; MR16OUT	6
			Mercury Security: EP1501; MR51e; MR50 ProWatch (Honeywell): PW6101	12

If you're looking for more personalised advice, don't hesitate to reach out to one of our experts and we'll be happy to assist.

[Speak to one of our experts](#)

POE ULTRAPOD™



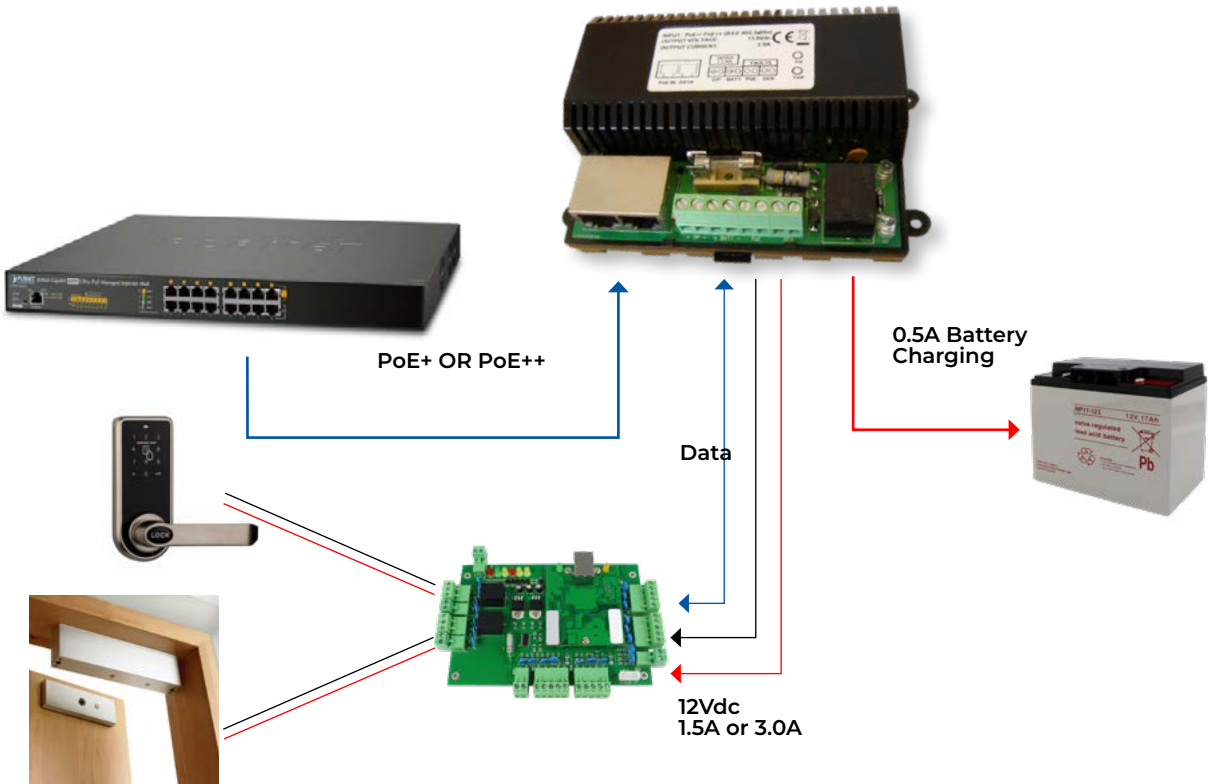
Features

- Converts PoE input to 12V dc output
- Provides 12V dc, up to 3A to the device with an additional 0.5A for battery charging (PoE++required)
- Offers battery back-up on loss of input PoE power
- Provides remote fault monitoring outputs:
 - PoE Input failure
 - Battery Low
- Data pass through for IP connections
- Powered remotely by:
 - PoE++ (PoE 802.3bt)
 - PoE+ (PoE 802.3at)
 - PoE (PoE 802.3af)
- Enclosures for POE UltraPod module are available separately

POE-ULTRAPOD-MOD comes with a 3 year warranty.



[Find out more](#)



Part Number	Description	Dimensions
POE-ULTRAPOD-MOD	POE++ splitter DIN mountable module with battery charging and 12V 3A output	40 H x 125 W x 85 D



UNIVERSAL ENCLOSURE

UNIVERSAL ENCLOSURE RANGE

Tailored for general purpose applications
Engineered by Elmdene



Providing solutions to universal compatibility

Benefits

- **Compatibility**
Compatible with **any** third-party device, including control boards, communicators and modules.
- **Tamper proof**
Provided with front and rear tamperers as standard.
- **Ease of installation**
Third-party devices easily installed without drilling holes; all fixings supplied.
- **Versatile**
Available in medium and large variants to accommodate a range of device sizes (or multiple devices).



UNIVERSAL-ENC-M

Medium tampered enclosure with universal backplate
330H x 377W x 85D (mm)

UNIVERSAL-ENC-L

Large tampered enclosure with universal backplate
500H x 400W x 80D (mm)

UNIVERSAL-1224-L

Selectable 12V, 8A /24V, 4A, PSU in large tampered enclosure with universal backplate
500H x 400W x 80D (mm)

FIND OUT MORE

STEP 1:

CHOOSE THE ENCLOSURE

STEP 2:

CHOOSE THE POWER MODULE

OR:

CHOOSE THE ENCLOSURE
WITH
THE SELECTABLE 12/24V OPTION



TOUCHLESS EXIT BUTTON

OVERVIEW

IR Access Control Devices for Internal and External Installation



- Touchless Exit Button solutions for contactless door control
- Infra-Red (IR) devices to work with Access Control systems
- Ideal for clean environments or high-traffic areas
- Designed to prevent any interference with other infra-red devices
- Adjustable latch time 0.5 - 30 seconds
- Adjustable trigger distance 4 - 15cm
- Infra-red sensor: 100,000 hours
- Relay: 1,000,000 operations
- 1 Year warranty

DESCRIPTION

IR Exit Buttons are touch-free devices designed to work with access control systems, for contactless door control.

Using IR Exit Buttons reduces contact and transmission of infections in high traffic areas such as hospitals, food preparation rooms, care homes and schools.

[Find out more](#)

TECHNICAL SPECIFICATIONS

Supply Voltage	12-24Vdc
Output Loading	N/A
Maximum Current	1A
Contacts Available	NO and NC
Operating Temperature	-20C - +70C



APPROVALS
CE Mark

Part Number	Description
AMS-EBIR3-RG	Stainless steel 86mm x 86mm x 15mm*, 100g Red LED turns Green when activated (interchangeable)
AMS-EBIR-BOX	Surface mount box, 28mm Chrome effect plastic

**fits standard UK switch boxes*

COMPLIANT PSUS FOR INTRUDER SYSTEMS



INTRUDER POWER SUPPLIES



			GEN range
Output Voltage	12V dc	13.8Vdc output for 12V devices	●
Input Voltage	110VAC		●
	240VAC		●
Output Current	1A	Maximum rated load current	●
	2A	Maximum rated load current	●
	3A	Maximum rated load current	●
Features	SLA Battery Charging	On-board battery charging for emergency backup lead-acid batteries	●
	Lid Tamper	Signal to warn lid has been opened	G2 G3
	Wall Tamper	Signal to warn PSU has been removed from wall	G3
	Low battery warning	Signal when battery voltage becomes low	●
	Mains fail warning	Signal to warn mains power as been lost	●
	PSU Fault warning	Signal to warn the PSU has an internal fault	●
	Battery Fault warning	Signal to warn the battery has a fault	●
	Battery deep discharge protection	Low battery cut-off, which prolongs the life of battery	●
Mounting options	Steel enclosure (white)	Enclosure for PSU and battery is made from steel	●
	DIN rail fixing / module only	Power module is able to fix to standard DIN rail for custom installations	●
	Lifetime Warranty	Standard warranty for Elmdene PSUs	●
	Operating Temp -10 to +40oC	PSU will operate to full load within these temperatures	●
Product Standards	CE/UKCA compliant	Minimal requirement for electronic products within UK and EU	●
	EN50131-6 Grade 2 approved	Mandatory requirement for Grade 2 intruder systems	●
	EN50131-6 Grade 3 approved	Mandatory requirement for Grade 3 intruder systems	○
	System Level 5 approved (FPC)	Extra approval for Factory (Spain market)	○
Typical Application	Intruder		●

● = Included / ○ = Optional / G2 = Grade 2 / G3 = Grade 3



12V GEN RANGE EN50131-6 APPROVED



Switch Mode
Technology

OVERVIEW

Specifically designed for Intruder system applications where compliance to EN50131-6 is required.



GRADE 2

System 5 Registration

GRADE 3

System 5 Registration

FEATURES

- Grade 2 and 3 compliant options
- Mains fail / battery fault monitoring / low output
- Range of battery and enclosure options
- Deep discharge battery protection
- EN50131-6 compliant

[Find out more](#)

Part Number	Amp Rating	Dimensions	Will Fit Battery Size
GEN2-08-A	1.0	200 H x 230 W x 80 D	1 x 7 or 8Ah
GEN2-08-B		330 H x 355 W x 80 D	
GEN2-18-B	1.5	330 H x 355 W x 80 D	1 x 17 or 18Ah
GEN2-18-C		275 H x 330 W x 80 D	
GEN3-08-A	1.0	200 H x 230 W x 80 D	1 x 7 or 8Ah
GEN3-08-B		330 H x 355 W x 80 D	
GEN3-18-B	1.5	330 H x 355 W x 80 D	1 x 17 or 18Ah
GEN3-18-C		275 H x 330 W x 80 D	
GEN3-34-R*	3.0	410 H x 390 W x 86 D	2 x 12V 17Ah

*Meets the requirements of EN50131-6



Approvals & Certification

GEN2 Certified with EN50131-6:2017,
Kiwa Certified

GEN3 Certified with EN50131-6:2017,
Kiwa Certified
(with exception of GEN3-34-R)

PD6662:2017

ISO/IEC guide 67 System 5 Registration,
Telefication (Kiwa) Certified -
Continued Compliance

If you're looking for more personalised advice, don't hesitate to reach out to one of our experts and we'll be happy to assist.

[Speak to one of our experts](#)

Li POWER

EN50131-6 COMPLIANT

Lithium Power Technology by Elmdene

Designed to house and power common alarm signalling communicators whilst accommodating and charging in-built Lithium battery packs. Offered in a low-profile, sleek enclosure, it provides a compact and flexible solution for intruder installations at both Grade 2 and Grade 3 requirements (EN50131-6:2017 and PD6662).

FEATURES

- 12V dc power supply with integrated lithium batteries
- Ideal for housing common communication alarm signalling devices
- Provides 150mA to load Mains fail signalling (EPS)
- General PSU fault signalling (GEN)
- Front and rear tamper protection
- Sleek, compact plastic enclosure
- Compliant with EN50131-6 Grade 2 & Grade 3 (2 models available)

BENEFITS

- **Extended Life Expenctancy**
Compared to SLA batteries
- **Space Saving**
Compact, sleek design reduces power supply footprint by up to 50%
- **Design Compatibility**
Designed to accommodate popular brands of communicators, including; CSL, Addsecure, Bosch, Flacon, Permaconn and Radio Data



Part Number	Grade	Dimensions	Description
LPS-12-G2	2	L 266 x W 195 x D 60	12 hour battery backup
LPS-12-G3	3	L266 x W195 x D60	30 hour battery backup
LPS-ENC-T	2 & 3	L260 x W201 x D67 (mm)	Enclosure only with Front & Rear Tamperers
LPS-BATT-G2	N/A	L68 x W56 x D20 (mm)	Replacement G2 Battery Pack 8500mAh
LPS-BATT-G3		L66 x W111 x D19 (mm)	Replacement G3 Battery Pack 18000mAh

[Find out more](#)

SIMPLICITY IN POWER SUPPLY INTEGRATION



RAPIER EXTERNAL SOUNDER

OVERVIEW

A range of high quality stainless steel sounders that fully meet the requirements of EN50131-4:2019 Grade 3.

INCERT Approved External Sounder RAPIER-6510 model.



FEATURES

- Low power operation: 10mA standby, 180mA full alarm
- Environmental class IV
- Battery and Piezo self-test with fault output
- 3 year warranty

Part Number	Sound Output at 1M	Dimensions
RAPIER-G3S	113dB(A)	342 H x 221 W x 55 D
RAPIER-6510 (INCERT)		

APPROVALS & CERTIFICATION

- PD6662:2017
- EN50131-1:2006 +A1+A2+A3 :2020
- EN50131-4:2019
- EN50130-4:2011+A1:2014
- EN50130-5:2011
- INCERT certified (C-015-1576 valid until 22/7/2028) (RAPIER-6510 model)

[Find out more](#)

If you're looking for more personalised advice, don't hesitate to reach out to one of our experts and we'll be happy to assist.

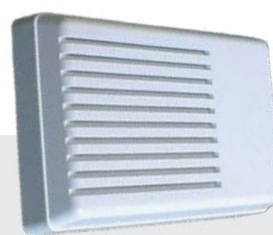
Speak to one of our experts



INTERNAL SOUNDER RANGE

OVERVIEW

A range of internal sounders for use in intruder alarm systems and retail security.



INT400 & 600



INT500

INT RANGE

- Available in three versions:
 - Alarm only
 - Alarm & Exit/Entry
 - Alarm, Exit/Entry & Strobe
- Each with or without internal battery for SAB or direct operation
- 12V dc, with tough polycarbonate cover and backplate.
- 3 year warranty

COMPLIANT TO:

- PD6662:2017
- EN50131-1:2006
- EN50131-4:2019

Part Number	Grade	Description	Sound Output at 1M	Dimensions
INT400	3	Alarm only	110dB(A)	110 H x 160 W x 40 D
INT400S	2	Alarm only with NiCad battery for SAB operation		
INT500	3	Alarm & Entry/Exit sounder with strobe		
INT500S	2	Alarm & Entry/Exit with strobe and NiCad battery for SAB operation		
INT600	3	Alarm & Entry/Exit sounder		
INT600S	2	Alarm & Entry/Exit sounder with NiCad battery for SAB operation		

[Find out more](#)


EXTENSION SPEAKERS

- 8Ω and 16Ω units available
- 20W rating
- Tampered Enclosure (16T & 8T Model)
- Polycarbonate enclosure
- 3 year warranty

Part Number	Dimensions
TS443-16T	110 H x 110 W x 55 D
TS443-16	
TS443-8T	

[Find out more](#)



MAGNETIC CONTACTS - GRADE 2 AND 3

For use with wired alarm systems, to protect windows, doors and roller shutters. Elmdene have a vast range of Grade 1, 2 and 3 magnetic contacts, in Metal or Plastic, Flush or Surface mount, to suit the application.


[Find out more](#)

FEATURES

- Ideal for single or multiple doors
- Cabled or Terminal
- Environmental class II and III
- 5 year warranty

COMPLIANT TO:

- PD6662:2017
- EN50131-1:2006
- EN50131-2-6:2008

GRADE 2 AND 3 METAL AND PLASTIC CONTACTS FLUSH MOUNTED OR SURFACE MOUNTED CONTACTS.

	Part Number	Grade	Env/ Class	Type	Potted/ Terminal	Metal/ Plastic	Operating Gap (mm)	Resistors	Dimensions (mm)
	QFT-GN QFT-RD	2	II	Flush	Terminal	P	10	1k/1k 4k7/2k2	20mm dia
	RFT-RD	2	II	Flush	Terminal	P	10	4k7/2k2	20mm dia
	QST-GN QST-RD	2	II	Surface	Terminal	P	20	1k/1k 4k7/2k2	70 L x 17 W x 15 D
	6HD-GN	2	III	Surface	Potted	M	25	1k/1k	80 L x 19 W x 12.5 D
	VHDA-GN	2	II	Surface	Terminal	M/P	42	1k/1k	170L x 25W x 25D
	6RSA-100-GN 6RSA-100-RD	2	III	Roller Shutter	Potted	M	55	1k/1k 4k7/2k2	150L x 40W x 14D
	EN3-QFC-GN EN3-QFC-RD	3		Flush	Potted	P	13	1k/1k 4k7/2k2	20mm dia 27mm depth
	EN3-QSC-GN			Surface	Potted	P	11	1k/1k	70 L x 17 W x 15 D
	EN3-LSC-GN EN3-LSC-RD			Surface	Potted	P	7	1k/1k 4k7/2k2	93 L x 25 W x 25 D
	EN3-RSA-GN EN3-RSA-RD			Roller Shutter	Potted	M	18	1k/1k 4k7/2k2	150 L x 40 W x 14 D

All part numbers within this range are to be purchased in packs of 10.



JUNCTION BOXES

Overview




Junction boxes featuring a high reliability spring action micro switch for the lid tamper providing real peace of mind when connecting the tamper to the junction box. The range meets the requirements of PD6662:2017 and EN50131-1:2006+A1:2009.

FEATURES

- Shrouded spring action microswitch tamper
- Clamp style terminals (except EN3-JB9-HD)
- IP67 rating for EN3-JB9-HD
- Accommodates various wiring systems:
 - cable
 - trunking
 - conduit
- 5 year warranty

COMPLIANT TO:

- PD6662:2017
- EN50131-1:2006

	Part Number	Terminations	Grade	Env Class	Dimensions: L x W x D
	EN3-JB10	10 8 + 2 for Tamper	3	II	93 x 25 x 26
	EN3-JB26	26 24 + 2 for Tamper			124 x 100 x 45
	EN3-JB9-HD	9 7 + 2 for Tamper		III	94 x 40 x 25

All part numbers within this range are to be purchased in packs of 10.

[Find out more](#)

If you're looking for more personalised advice, don't hesitate to reach out to one of our experts and we'll be happy to assist.

[Speak to one of our experts](#)



PANIC BUTTONS

Overview

Grade 3 Double Push Panic Buttons with integral resistors for use with most control panels. Spare terminals allow through connection for multiple units wired to one zone. Special features include integral storage of reset key and anti-loc reset mechanism to ensure unit still operates if reset key is left in the unit and silent operation.

Elmdene Panic Buttons fully comply with «The ACPO 10 Point Plan» and all requirements under EN50131-1:2006 +A1:2009 and PD6662:2017 A1 + A2.


[Find out more](#)

FEATURES

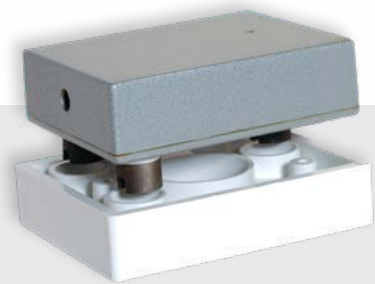
- Silent operation
- FSL and DP connection options
- Multiple control panel/resistor options
- Cover and rear tamper
- 5 year warranty

Part Number	Colour	Dimensions
ELM-PA-G3-W	White	80 L x 62 W x 27 D
ELM-PA-KEY	Set of spare keys for the PA models	

SAFE LIMPETS

Overview

Designed for the protection of Safes, Filing Cabinets, Fruit Machines and any valuable article or piece of equipment that has a ferrous metal exterior. Safe Limpets incorporate multiple detection systems to provide comprehensive protection against attack.


[Find out more](#)

FEATURES

- Grade 3, Environmental class II
- Vibration detection
- Integral analyser
- Thermal sensor
- Proximity sensor
- Magnetic Interference Detection (E20)
- 3 Year warranty

Part Number	Dimensions
LIMPET-E20	120 H x 95 W x 52 D
Keyhole Aperture: 45mm	

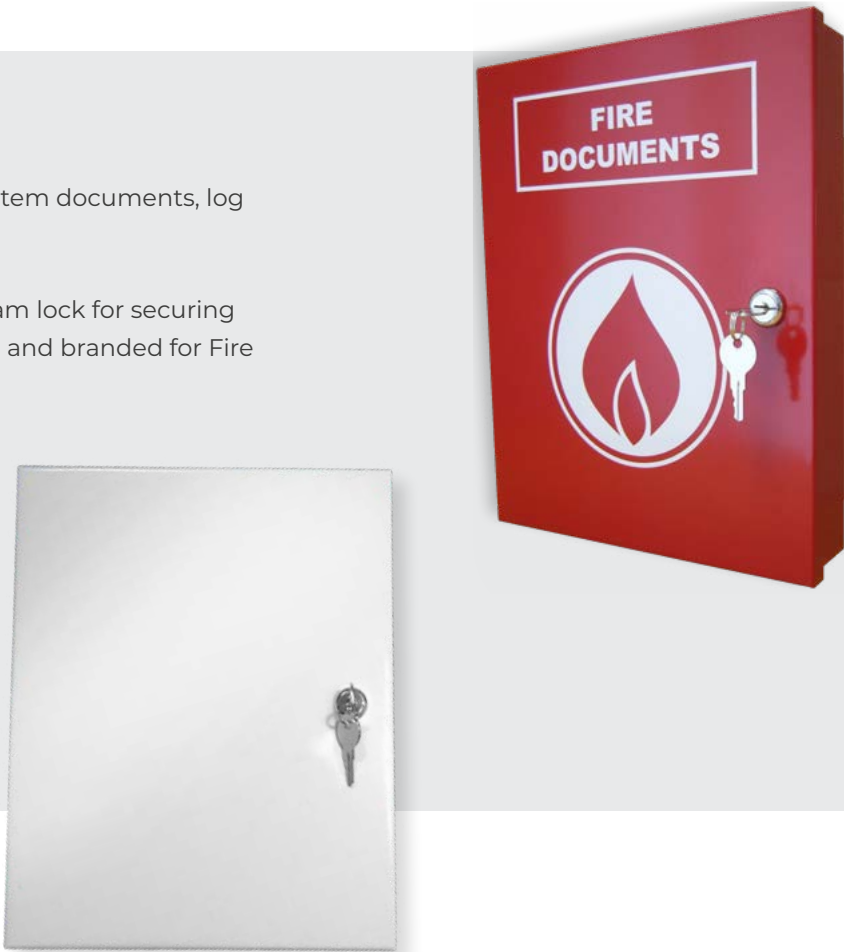


A4 DOCUMENT BOXES

OVERVIEW

Ideal for the safe keeping of important system documents, log books and other paperwork.

A4 boxes formed with coated steel with cam lock for securing documentation. Fire Document Box is red and branded for Fire applications with a white 'Fire' logo.



FEATURES

- Standard A4 size
- Lockable enclosure
- All units are keyed alike
- Provided with 2 keys
- 5 year warranty

Find out more

Part Number	Dimensions
A4-DOC-BOX-R-FIRE	300 H x 235 W x 50 D
A4-DOC-BOX	300 H x 235 W x 50 D

POWER SUPPLIES

DIN RAIL



12V Ranges

G Range N Series

G13802NU, G13803NU, G13804NU-4,
G13805NU

PAGE 09

G Range BM Series

G13802BMU, G13803BMU, G13805BMU

PAGE 10

24V Ranges

G Range N Series

G2402NU, G2403NU, G2405NU

PAGE 11

G Range BM Series

G2402BMU, G2403BMU

PAGE 12

STX

(1A & 2A version)

PAGE 18

For Various Applications



ELMDENE PRODUCT RANGE WARRANTIES



General

Power Supplies

G Range	Lifetime
---------	----------

PSU Accessories

Output Modules	3 Years
Relays	3 Years

Ancillaries

Document Boxes	5 Years
----------------	---------



Access Control

Power Supplies

Access Control PSU Range	Lifetime
--------------------------	----------

Ancillaries

Exit Buttons	1 Year
--------------	--------



Fire

Power Supplies

STX Range	Lifetime
ST Range	Lifetime



Intruder

Power Supplies

GEN Range	Lifetime
-----------	----------

Ancillaries

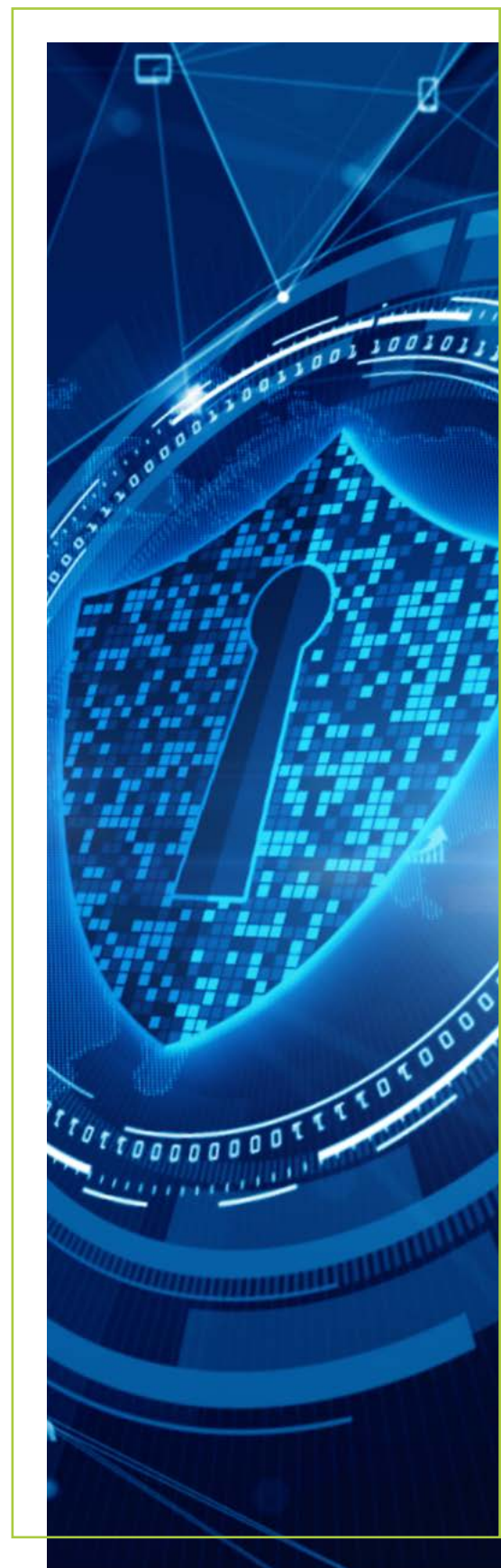
Magnetic Contacts	5 Years
Junction Boxes	5 Years
Panic Alarms	5 Years
External Sounders	3 Years
Internal Sounders	3 Years
Extension Speakers	3 Years
Safe Limpets	3 Years



Lithium Power

Li-Power Range*	Lifetime
-----------------	----------

*Excluding batteries



WE HOPE YOU GAINED SOME VALUABLE INSIGHT

WE LOOK FORWARD TO STAYING IN TOUCH!

To discover more about Elmdene, or any of our product ranges, get in touch with our team of experts who will be happy to talk about finding an ideal solution for your unique needs.

[Get in touch](#)

If you haven't downloaded our **Security & Fire Installations, Your Power Supply Guide** just yet - we highly recommend it.

[Download](#)

To stay up-to-date with our latest news and updates, follow us on social media, or visit our website.

