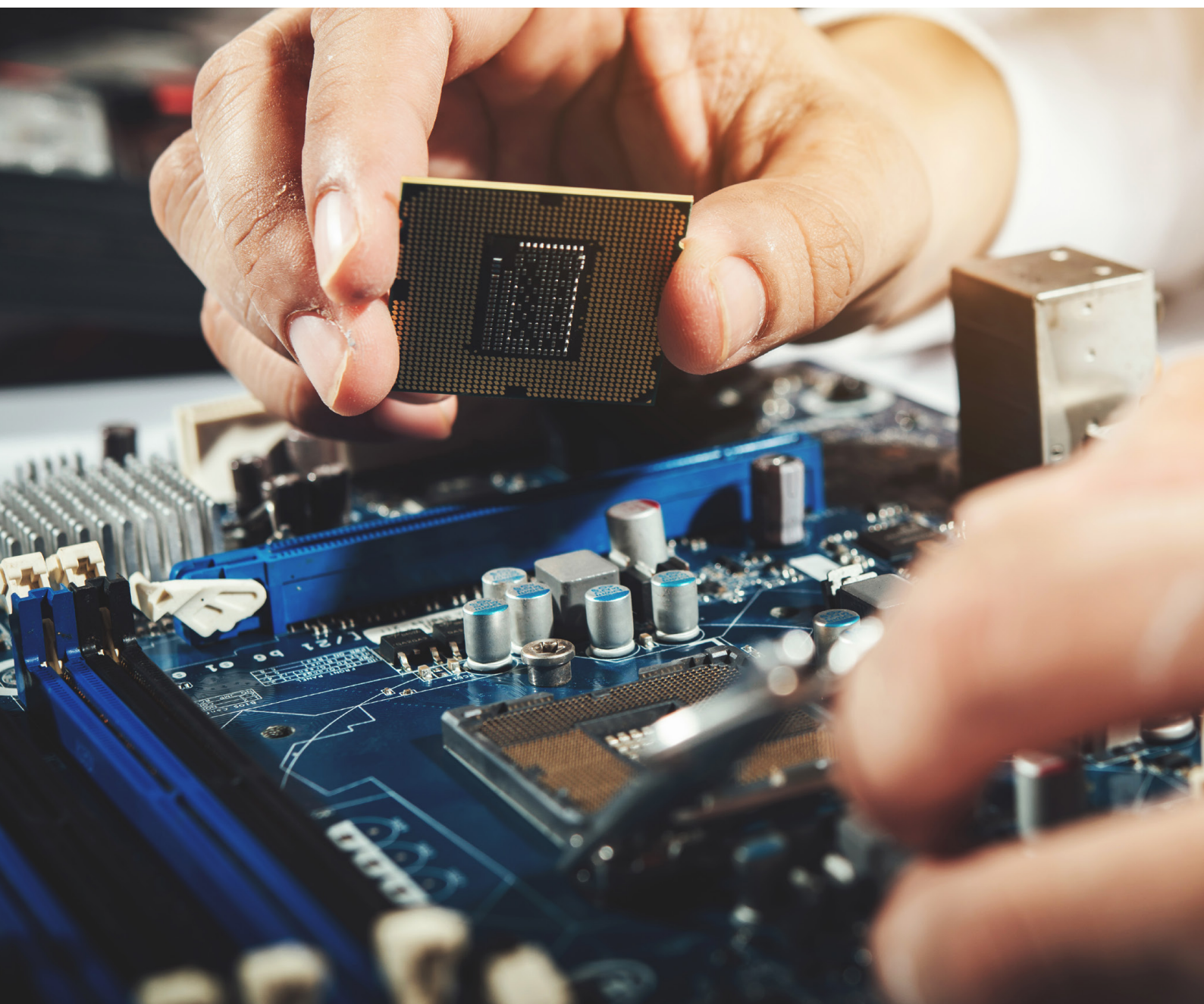


AN INDUSTRY LEADING UK BRAND

PRODUCT GUIDE

Elmdene International Limited is a world class manufacturer of electronic products for the Fire and Security Industries.



ABOUT ELMDENE INTERNATIONAL



With over **50 years** of specialist experience in designing and manufacturing fire and security products, Elmdene is the dependable choice for quality products.

Built to integrate seamlessly into an infinite variety of systems Elmdene's products, above all, deliver peace-of-mind to system integrators, manufacturers and installers.

Established in 1963, with a manufacturing plant based in Portsmouth (south coast of England), our business has been built on a philosophy that insists our products are made to the highest standards. Our range also continues to expand with the changing needs of the industry, customers and end users.

“The true proof of our quality is in the **lifetime warranty** we offer on our power supplies.”

- Elmdene International Ltd.



ONGOING SUPPORT

Elmdene has earned a great reputation from partnerships, bringing comprehensive technical knowledge, manufacturing expertise and first-class project management to each unique solution brought to market.

OUR PSU SOLUTIONS



FULL PRODUCT DEVELOPMENT PROCESS

Having vast experience with product development, Elmdene is a choice partner that manages the full process: From generating concepts, through to production and then finally - technical support.



IN-HOUSE CAPABILITIES

- In-house Design Team for Custom Branding Opportunities.
- Concept and 3D Modelling.
- Expert Advice on Bespoke Solutions and Leading Power Supply Design.
- Dedicated, Fast-Reacting Sales and Technical Support.

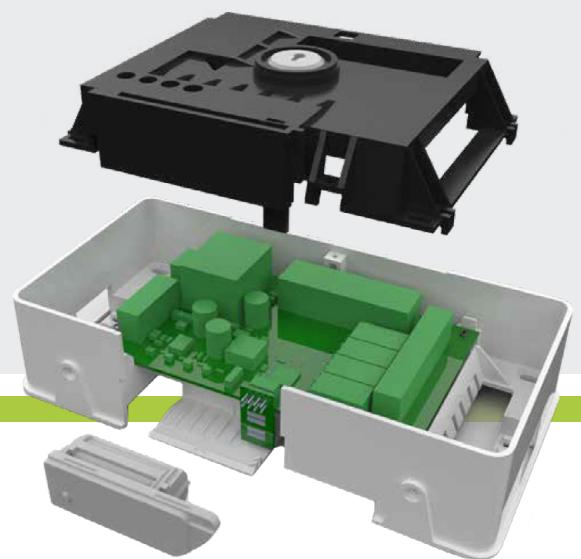
Underpinning our capabilities

- Elmdene has a Quality Management System accredited to ISO 9001:2015 and specialises in manufacturing products to quality and technical standards from across the world, including VdS, Nfa2p, INCERT, UL and Kiwa.



PRODUCTION EXPERTISE

- Mechanical Design
- Electronic Design
- Plastic Moulding
- Software Development
- Tooling Expertise



ELMDENE ACCREDITATIONS

We are accredited to BS EN9001 for our quality management system and compliant to ISO 14001 for environmental management. We work to meet the requirements of quality and technical standards around the world.

We have recently received accreditation for the below products:

- UL294 Access Control PSU Range
- EN54-4 Fire Range
- EN50131-6 (system 5) PSUs for intruder systems



GREEN CREDENTIALS

Actively seeking opportunities for environmental friendliness is a key duty for us. We build energy efficiency into our products as much as possible, both from an environmental responsibility perspective, and a cost and longevity perspective.

Our switch mode power supply units are typically 80-87% efficient. This is a significant difference that can help save your customer money while helping them meet their own green commitments.

We are committed to living up to our green philosophy, and as a result, we are compliant to **ISO 14001** as well as the **WEEE (2012/19/EU)** and **RoHS (2011/65/EC)** EU Environmental Directives.

For more information click [here](#).



Switch Mode
Technology



ELMDENE PRODUCT RANGE OVERVIEW



General

Power Supplies

12V G Range N Series (Unmonitored).....	09
12V G Range BM Series (Monitored).....	10
24V G Range N Series (Unmonitored).....	11
24V G Range BM Series (Monitored).....	12
12-24V Switchable Range.....	13



Fire

Power Supplies

24V EN54-4 STX Range.....	16
24V EN54-4 & EN12101-10 ST Range.....	17
24V Door Retainer Power Supply Range.....	18



Access Control

Power Supplies

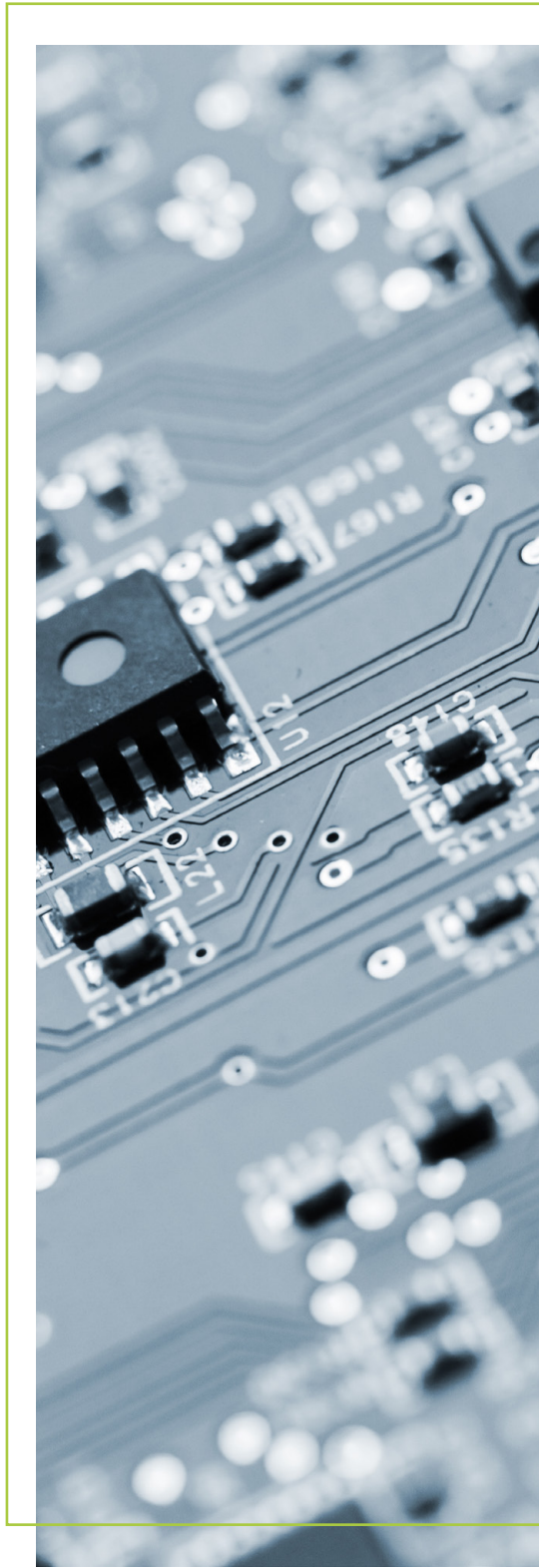
ACCESS-PSU Range.....	21
ACCESS-UL-PSU Range.....	22
PoE Ultrapod™.....	23



Intruder

Power Supplies

12V GEN EN50131-6 Approved Range.....	27
---------------------------------------	----



POWER SUPPLY ENCLOSURES

A range of box sizes are available for Elmdene power supplies. Use the table below to identify the box size for your application.

- As standard, boxed power supplies are made from powder coated steel and finished in white
- Some units are available in polycarbonate IP66/IP68 rated boxes
- Unboxed modules can be lug or DIN rail mounted
- All un-boxed 12V models are DIN Rail Mountable

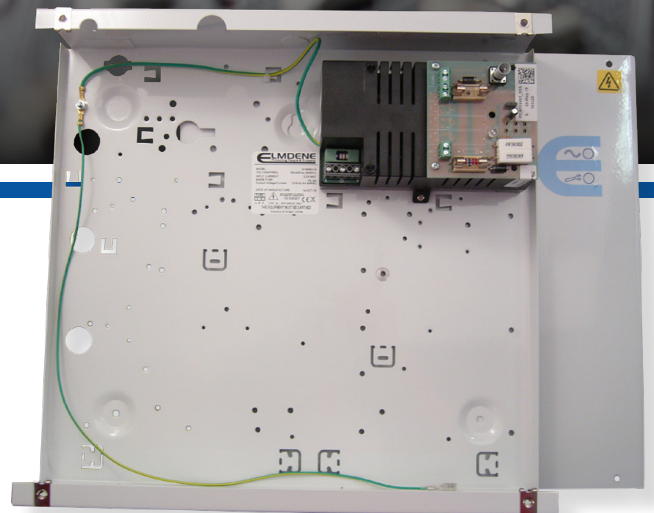
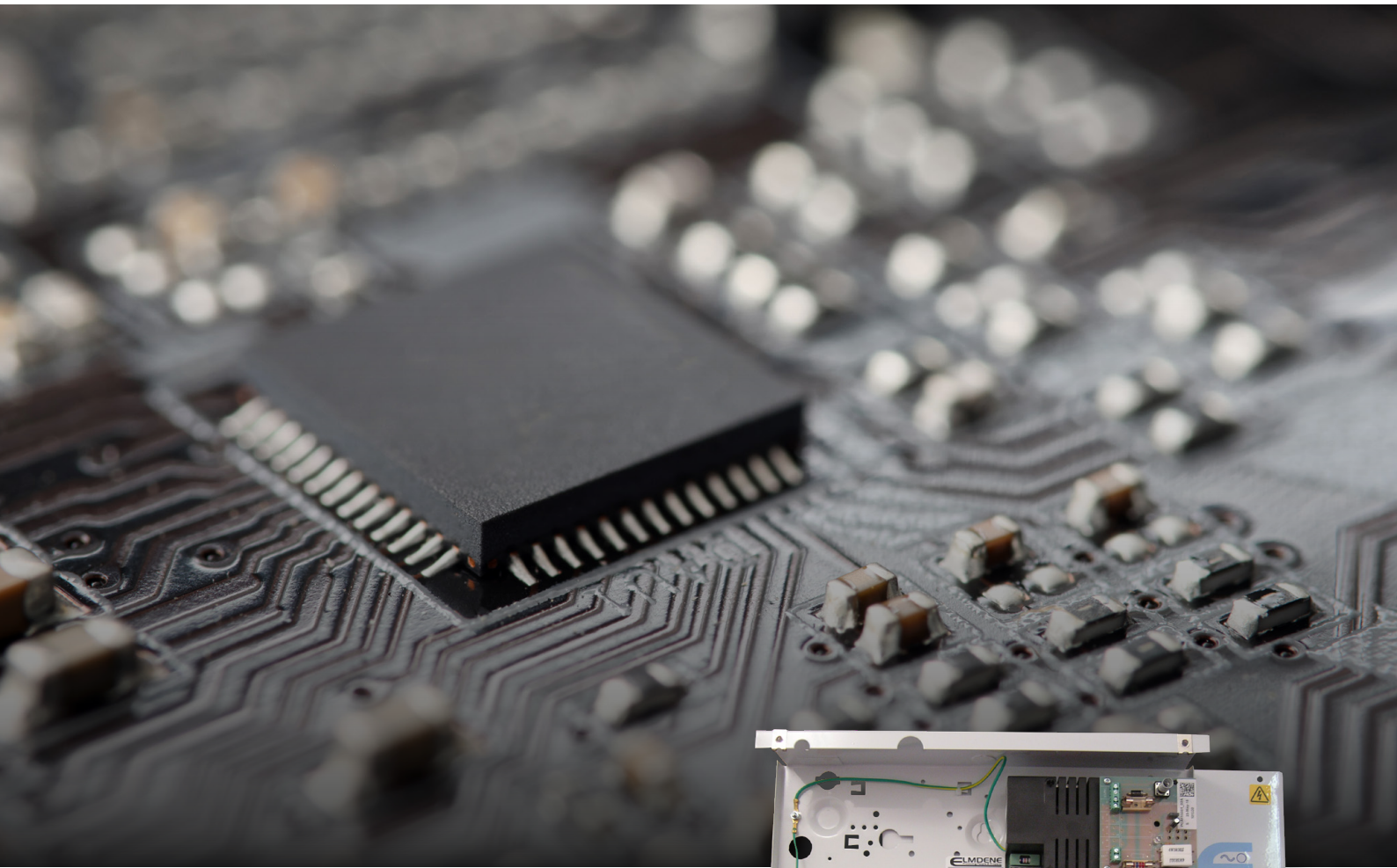
Box Reference	Dimensions (mm)	Enclosure Type	Lid Type
A	200 H x 230 W x 80 D	Powder Coated Steel	Hinge
B	330 H x 355 W x 80 D		Clam
B2	380 H x 334 W x 85 D		Hinge
C	275 H x 330 W x 80 D		Hinge
D	500 H x 400 W x 80 D		
E	420 H x 400 W x 80 D		
F	380 H x 230 W x 75 D		
G	440 H x 250 W x 115 D		
H	420 H x 420 W x 180 D		
J	185 H x 200 W x 53 D		
K	325 H x 350 W x 105 D		
L	100 H x 150 W x 65 D		Clam
M	182 H x 182 W x 90 D	IP66	Screw
P	250 H x 150 W x 100 D	IP68	
Q	200 H x 200 W x 100 D	IP66	
R	410 H x 390 W x 86 D	Powder Coated Steel	Clam
S	345 H x 288 W x 90 D		
T	300 H x 240 W x 60 D		Hinge
V	515 H x 478 W x 146 D		



Why not make your product stand out with the **Custom Designed** Enclosure and **Branding** services available.

See pages 29 & 30 for more information.

STANDBY POWER FOR GENERAL APPLICATIONS



SECURITY POWER SUPPLIES PRODUCT RANGE



			12V G range N	12V G range BM	Switchable range	24V G range N	24V G range BM
Output Voltage	12V dc	13.8Vdc output for 12V devices	•	•	•		
	24V dc	27.6Vdc output for 24V devices			•	•	•
Input Voltage	110VAC		•	•	•	•	•
	240VAC		•	•	•	•	•
Output Current	1A	Maximum rated load current	•	•	•	•	•
	2A	Maximum rated load current	•	•	•	•	•
	3A	Maximum rated load current	•	•	•	•	•
	4A	Maximum rated load current	•	•	•	•	•
	5A	Maximum rated load current	•	•	•	•	•
	8A	Maximum rated load current			•		
	10A	Maximum rated load current		•			•
Features	SLA Battery Charging	On-board battery charging for emergency backup lead-acid batteries	•	•	•	•	•
	Lid Tamper	Signal to warn lid has been opened	•	•	•		
	Wall Tamper	Signal to warn PSU has been removed from wall		•	•		
	Low battery warning	Signal when battery voltage becomes low		•			•
	Mains fail warning	Signal to warn mains power as been lost		•	•		•
	PSU Fault warning	Signal to warn the PSU has an internal fault		•			•
	Battery Fault warning	Signal to warn the battery has a fault		•			•
	Battery deep discharge protection	Low battery cut-off, which prolongs the life of battery		•			•
	LED indication	Visual identification on PSU lid	•	•	•	•	•
	12/24V switchable outputs	Output can be switched from 12V to 24V via manual switch	◦	◦		◦	◦
	Multiple fused outputs (glass fuse) - options	Multiple fused outputs enable multiple devices to be powered, with glass fuse protection			•		
	Independent ancillary relay	A separate relay that can be used to signal or trigger independent events	•	•	•	•	•
Mounting options	Steel enclosure (white)	Enclosure for PSU and battery is made from steel	•	•		◦	◦
	DIN rail fixing / module only	Power module is able to fix to standard DIN rail for custom installations	•	•	•	•	•
	Lifetime Warranty	Standard warranty for Elmdene PSUs	•	•	•	•	•
	Operating Temp -10 to +40oC	PSU will operate to full load within these temperatures	•	•	•	•	•
Product Standards	CE/UKCA compliant	Minimal requirement for electronic products within UK and EU	•	•	•	•	•
Typical Application	General Purpose		•	•	•	•	•
	Access Control		•	•	•	•	•
	CCTV		•	•	•	•	•

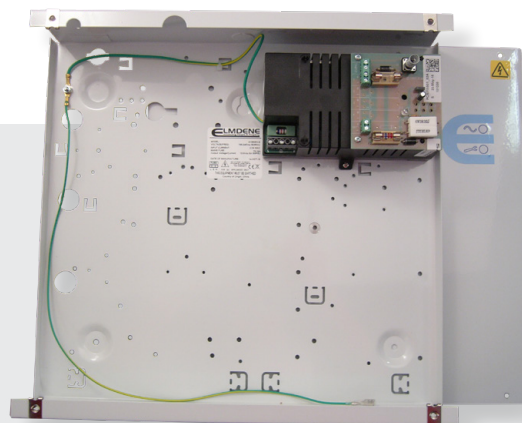
• = Included / ◦ = Optional

12V G RANGE N SERIES (UNMONITORED)

OVERVIEW

This range has a regulated highly stable output supplying full rated current to load, plus additional battery charge and a universal mains voltage input charging (90 to 264V ac).

**Also suitable for Access Control
and Intruder systems**



Switch Mode
Technology

FEATURES

- 13.8V dc output
- Full rated current to load + 0.5A battery charging
- Modular construction means easy maintenance and upgrading
- Cost effective switch mode
- Front tamper protection
- Energy efficient
- Available in boxed and unboxed
- Battery leads now included with unboxed models

**Some part numbers within this range may be subject to MOQs*

[Find out more](#)

If you're looking for more personalised advice, don't hesitate to reach out to one of our experts and we'll be happy to assist.

[Speak to one of our experts](#)

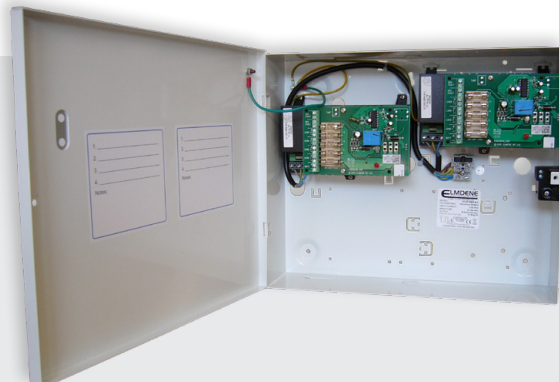
Part Number	Amp Rating	Dimensions	Will Fit Battery Size
G13801N-A	1.0	200 H x 230 W x 80 D	1 x 7Ah
G13801N-B		330 H x 355 W x 80 D	1 x 17Ah
G13801N-C		275 H x 330 W x 80 D	
G13802N-A	2.0	200 H x 230 W x 80 D	1 x 7Ah
G13802N-B		330 H x 355 W x 80 D	1 x 17Ah
G13802N-C		275 H x 330 W x 80 D	
G13803N-A	3.0	200 H x 230 W x 80 D	1 x 7Ah
G13803N-B		330 H x 355 W x 80 D	1 x 17Ah
G13803N-C		275 H x 330 W x 80 D	
G13804N-B	4.0	330 H x 355 W x 80 D	
G13804N-C		275 H x 330 W x 80 D	
G13804N-4-C	4 x 1A		
G13805N-B	5.0	330 H x 355 W x 80 D	
G13805N-C		275 H x 330 W x 80 D	
Part Number	Amp Rating	Description	Dimensions
G13801NU	1.0	Unboxed DIN RAIL Mountable (Battery leads included)	134 L x 84 W x 42 H
G13802NU	2.0		
G13803NU	3.0		
G13804NU	4.0		152 L x 106 W x 71 H
G13804NU-4	4 x 1.0		
G13805NU	5.0		

12V G RANGE BM SERIES (MONITORED)

OVERVIEW

Ideal for applications requiring mains and battery monitoring with fault outputs in addition to battery deep discharge protection.

Also suitable for Access Control and Intruder systems



Switch Mode
Technology

FEATURES

- 13.8V dc output
- Full rated current to load + 0.5A battery charging
- Mains and battery monitoring
2x Volt free fault outputs
- Low battery warning
- Battery deep discharge protection
- Front and rear tamper protection
- Battery leads now included with unboxed models

**Some part numbers within this range may be subject to MOQs*

[Find out more](#)

If you're looking for more personalised advice, don't hesitate to reach out to one of our experts and we'll be happy to assist.

[Speak to one of our experts](#)

Part Number	Amp Rating	Dimensions	Will Fit Battery Size
G13801BM-A	1.0	200 H x 230 W x 80 D	1 x 7Ah
G13801BM-B		330 H x 355 W x 80 D	1 x 17Ah
G13801BM-C		275 H x 330 W x 80 D	
G13802BM-A	2.0	200 H x 230 W x 80 D	1 x 7Ah
G13802BM-B		330 H x 355 W x 80 D	1 x 17Ah
G13802BM-C		275 H x 330 W x 80 D	
G13803BM-B	3.0	330 H x 355 W x 80 D	
G13803BM-C		275 H x 330 W x 80 D	
G13804BM-B	4.0	330 H x 355 W x 80 D	
G13804BM-C		275 H x 330 W x 80 D	
G13805BM-B	5.0	330 H x 355 W x 80 D	
G13805BM-C		275 H x 330 W x 80 D	
G13810BM-8-C	10.0	275 H x 330 W x 80 D	2 x 7Ah
G13810BM-8-R		410 H x 390 W x 86 D	2 x 17Ah
Part Number	Amp Rating	Description	Dimensions
G13801BMU	1.0	Unboxed DIN RAIL (Battery leads included)	152 x 106 x 52
G13802BMU	2.0		152 x 106 x 71
G13803BMU	3.0		
G13804BMU	4.0		
G13805BMU	5.0		



24V G RANGE N SERIES (UNMONITORED)

OVERVIEW

Standard range of 24V dc power supplies with closely regulated output and universal mains input designed for general purpose applications.



Switch Mode
Technology

FEATURES

- 27.6V dc output
- Full rated current to load + 0.5A battery charging
- Boxed and un-boxed versions
- Electronic overload protection
- Universal mains input
- DIN rail mount option 1A & 2A models
- Battery leads now included with unboxed models

**Some part numbers within this range may be subject to MOQs*

[Find out more](#)

If you're looking for more personalised advice, don't hesitate to reach out to one of our experts and we'll be happy to assist.

[Speak to one of our experts](#)

Part Number	Amp Rating	Dimensions	Will Fit Battery Size
G2401N-C	1.0	275 H x 330 W x 80 D	2 x 12V 7Ah
G2401N-R		410 H X 390 W x 86 D	2 x 12V 17Ah
G2402N-C	2.0	275 H x 330 W x 80 D	2 x 12V 7Ah
G2402N-R		410 H X 390 W x 86 D	2 x 12V 17Ah
G2403N-C	3.0	275 H x 330 W x 80 D	2 x 12V 7Ah
G2403N-R		410 H X 390 W x 86 D	2 x 12V 17Ah
G2405N-C	5.0	275 H x 330 W x 80 D	2 x 12V 7Ah
G2405N-R		410 H X 390 W x 86 D	2 x 12V 17Ah
G2405N-H		420 H x 420 W x 180 D	2 x 12V 38Ah
Part Number	Amp Rating	Description	Dimensions
G2401NU	1.0	Unboxed DIN RAIL (Battery leads included)	134 x 84 x 42
G2402NU	2.0		152 x 106 x 52
G2403NU	3.0	Unboxed DIN RAIL (Battery leads included)	157 x 143 x 55
G2405NU	5.0		

24V G RANGE BM SERIES (MONITORED)

OVERVIEW

Ideal for applications requiring mains and battery monitoring with fault outputs in addition to battery deep discharge protection.



Switch Mode
Technology

FEATURES

- 27.6V dc output
- Full rated current to load + 0.5A battery charging
- Mains and battery monitoring
- Low battery warning
- 2x Volt free fault outputs
- Battery deep discharge protection
- Boxed and un-boxed versions
- Battery leads now included with unboxed models

**Some part numbers within this range may be subject to MOQs*

[Find out more](#)

If you're looking for more personalised advice, don't hesitate to reach out to one of our experts and we'll be happy to assist.

[Speak to one of our experts](#)

Part Number	Amp Rating	Dimensions	Will Fit Battery Size
G2401BM-C	1.0	275 H x 330 W x 80 D	2 x 12V 7Ah
G2401BM-R		410 H X 390 W x 86 D	2 x 12V 17Ah
G2402BM-C	2.0	275 H x 330 W x 80 D	2 x 12V 7Ah
G2402BM-R		410 H X 390 W x 86 D	2 x 12V 17Ah
G2403BM-C	3.0	275 H x 330 W x 80 D	2 x 12V 7Ah
G2403BM-R		410 H X 390 W x 86 D	2 x 12V 17Ah
G2405BM-C	5.0	275 H x 330 W x 80 D	2 x 12V 7Ah
G2405BM-R		410 H X 390 W x 86 D	2 x 12V 17Ah
G2405BM-H		420 H x 420 W x 180 D	2 x 12V 38Ah
G2410BM-E	10.0	420 H x 400 W x 80 D	2 x 12V 17Ah
Part Number	Amp Rating	Description	Dimensions
G2401BMU	1.0	Unboxed DIN RAIL (Battery leads included)	152 x 106 x 52
G2402BMU	2.0		
G2403BMU	3.0	Unboxed (Battery leads included)	157 x 143 x 55
G2405BMU	5.0		
G2410BMU	10.0		245 x 135 x 60

12-24V SWITCHABLE RANGE



OVERVIEW

A range of power supplies featuring a selectable 12V / 24V dc output to suit your required application.



Switch Mode
Technology

FEATURES

- Output selectable between 12V and 24V dc
- 4A/2A, 6A/3A, 8A/4A options at 12V/24V dc
- 7Ah or 17Ah battery options
- Mains fail relay fault output
- Independent ancillary relay
- Tamper protection

**Some part numbers within this range may be subject to MOQs*

[Find out more](#)

Part Number	Amp Rating 13.8V/27.6V	Fused Out-puts	Dimensions	Will Fit Battery Size
G1224-42N-C	4A / 2A	1	275 H x 330 W x 80 D	12V Mode: 1 x 12V 7Ah 24V Mode: 2 x 12V 7Ah
G1224-63N-C	6A / 3A			
G1224-84N-C	8A / 4A	1		
G1224-84N-4-C		4		
G1224-84N-8-C		8		
G1224-63N-R	6A / 3A	1	410 H x 390 W x 86 D	12V Mode: 1 x 12V 17Ah 24V Mode: 2 x 12V 17Ah
G1224-84N-R	8A / 4A	1		
G1224-84N-4-R		4		
G1224-84N-8-R		8		
G1224-84N-H	8A / 4A	1	420 H x 420 W x 180 D	24V Mode: 2 x 12V 38Ah
Part Number	Amp Rating 13.8V/27.6V	Fused Out-puts	Description	Will Fit Battery Size
G1224-42NU	4A / 2A	1	Unboxed	157 x 143 x 55
G1224-63NU	6A / 3A			
G1224-84NU	8A / 4A			

If you're looking for more personalised advice, don't hesitate to reach out to one of our experts and we'll be happy to assist.

[Speak to one of our experts](#)

FIRE & AOV SOLUTIONS



FIRE POWER SUPPLIES



			STX range	ST range	TR range
Output Voltage	24V dc	27.6Vdc output for 24V devices	•	•	•
Input Voltage	110VAC		•		
	240VAC		•	•	•
Output Current	1A	Maximum rated load current	•	•	•
	2A	Maximum rated load current	•	•	•
	3A	Maximum rated load current	•	•	•
	4A	Maximum rated load current	•	•	•
	5A	Maximum rated load current	•	•	
	8A	Maximum rated load current	•		
	10A	Maximum rated load current	•		
Features	SLA Battery Charging	On-board battery charging for emergency backup lead-acid batteries	•	•	
	Low battery warning	Signal to warn battery voltage level is getting low	•	•	
	Mains fail warning	Signal to warn mains power as been lost	•	•	
	PSU Fault warning	Signal to warn the PSU has an internal fault	•	•	
	Battery Fault warning	Signal to warn the battery has a fault	•	•	
	Battery deep discharge protection	Low battery cut-off, which prolongs the life of battery	•	•	
	LED indication	Visual identificaion on PSU lid	•	•	•
	Multiple fused outputs (glass fuse) - options	Multiple fused outputs enable multiple devices to be powered, with glass fuse protetion		•	
Mounting options	Remote control of output/Fire Alarm interface	Enables a fire alarm signal to remotely operate the PSU output (on/off)			•
	Steel enclosure (white)	Enclosure for PSU and battery is made from steel	•	•	•
	DIN rail fixing / module only	Power module is able to fix to standard DIN rail for custom installations	◦	◦	
	Lifetime Warranty	Standard warranty for Elmdene PSUs	•	•	•
Product Standards	Operating Temp -10 to +40oC	PSU will operate to full load within these temperatures	•	•	•
	CE/UKCA compliant	Minimal requirement for electronic products within UK and EU	•	•	•
	UL approved	UL approval needed for USA, South America and Middle East markets	UL-EU		
	VDS approved	German approval body		•	
	EN54-4 approved (CPR)	Mandatory requiement for fire power supplies	•	•	
	EN12101-10 approved (CPR)	Mandatory requirment for AOV (Automatic Opening Vent) power supplies		•	
	System Level 5 approved (FPC)	Extra approval for Factory (Spain market)	•	•	
	BS7273 compliant (door retainer)	Fire door retainer installation guidance - meets the needs of			•
Application	Fire	Fire door retainer installation guidance - meets the needs of	•	•	
	AOV			•	
	Door Retainer				•

• = Included / ◦ = Optional

FIRE

24V STX RANGE
EN54-4 APPROVED



OVERVIEW

These ranges of switch mode power supplies have been designed specifically for fire systems and are certified to **EN54-4:1997, A1:2002 & A2:2006**.



FEATURES

- 27.6V dc output
- Intelligent battery charging and monitoring - utilises Elmdene Eco-Charge technology
- Remote fault signalling
- Full rated current to load plus additional current for battery charging
- Serial communication available for OEM applications on request

**Some part numbers within this range may be subject to MOQs*

Find out more

Part Number	Amp Rating	Dimensions	Will Fit Battery Size
STX2401-T	1.0	300 H x 240 W x 60 D	2 x 12V 1.2Ah
STX2401-C		275 H x 330 W x 80 D	2 x 12V 7Ah
STX2402-C	2.0	420 H x 400 W x 80 D	2 x 12V 17Ah
STX2402-E		420 H x 400 W x 80 D	2 x 12V 17Ah
STX2405-C	5.0	275 H x 330 W x 80 D	2 x 12V 7Ah
STX2405-E		420 H x 400 W x 80 D	2 x 12V 17Ah
STX2410-E	10.0	420 H x 420 W x 180 D	2 x 12V 38Ah
STX2410-H	8.0	420 H x 420 W x 180 D	2 x 12V 38Ah
STX2410-E + BATT-BOX-65	7.2	420 H x 400 W x 80 D	2 x 12V 65Ah
	N/A	534 H x 465 W x 267 D	



Approvals & Certification
STX certified by UL to:
EN54-4:1997, A1:2002, A2:2006



If you're looking for more personalised advice, don't hesitate to reach out to one of our experts and we'll be happy to assist.

Speak to one of our experts

FIRE

24V EN54-4 ST RANGE

NEW
PRODUCT



Switch Mode
Technology



OVERVIEW

A range of power supplies specifically designed for fire alarm systems and certified by VDS (VdS 2541) to EN54-4 and for AOV systems to EN12101-10 by AFNOR.



FEATURES

- 1A, 2A and 5A versions
- 7Ah, 12Ah, 24Ah, 38Ah, 65Ah battery options
- Exterior Engineers Diagnostic LED, allowing for faster system diagnosis
- Dual outputs allow for compliant remote installation, from control panel (Dual Path) or used as two independent monitored outputs.
- Additional battery box available for 5A models

**Some part numbers within this range may be subject to MOQs*

[Find out more](#)



Approvals & Certification

EN54-4/ A2 -

"Fire detection and Alarm Systems":
Certified by VDS

EN12101-10 -

"Smoke and Heat control systems":
Certified by AFNOR

Part Number	Amp Rating	Dimensions	Will Fit Battery Size
2401ST-T	1.0	300 H x 240 W x 60 D	2 x 12V 1.2Ah
2401ST-C		275 H x 330 W x 80 D	2 x 12V 7Ah
2402ST-C	2.0	275 H x 330 W x 80 D	
2402ST-E		420 H x 400 W x 80 D	2 x 12V 17Ah / 18Ah
2402ST-K		325 H x 350 W x 105 D	2 x 12V 12Ah
2402ST-H		420 H x 420 W x 180 D	2 x 12V 24Ah / 38Ah
2405ST-C	5.0	275 H x 330 W x 80 D	2 x 12V 7Ah
2405ST-E		420 H x 400 W x 80 D	2 x 12V 17Ah
2405ST-K		325 H x 350 W x 105 D	2 x 12V 12Ah
2405ST-H		420 H x 420 W x 180 D	2 x 12V 24Ah / 38Ah
BATT-BOX-65	N/A	534 H x 465 W x 267 D	2 x 12V 65Ah

If you're looking for more personalised advice, don't hesitate to reach out to one of our experts and we'll be happy to assist.

[Speak to one of our experts](#)



24V DOOR RETAINER POWER SUPPLY RANGE



OVERVIEW

Designed for fire and access control applications that require control of the power supply output. For example, to power door retainers, with a link to the fire panel in order to switch off the output to the doors in the event of a fire alarm activation. All models are now configurable for Fail Safe operation, complying to BS7273.

FEATURES

- 27V dc nominal output
- Remote control of output
- **Choice of switching options:**
 - Closing of a normally open Volt-free contact
 - Opening of a normally closed Volt-free contact
 - Removal of an external 24V dc supply
- BS7273 Compliant
- Mains transient protection

**Some part numbers within this range may be subject to MOQs*

Part Number	Amp Rating	Dimensions
TRS1	1.0	185 H x 200 W x 53 D

Note: This range is not suitable for use with standby batteries.

Part Number	Amp Rating	Dimensions
TR2	2.0	200 H x 230 W x 80 D
TR4	4.0	

Find out more

If you're looking for more personalised advice, don't hesitate to reach out to one of our experts and we'll be happy to assist.

Speak to one of our experts

SOLUTIONS COMPATIBLE WITH MAJOR ACCESS CONTROL SYSTEMS



ACCESS CONTROL POWER SUPPLIES



			ACCESS range	ACCESS UL range	POE- ULTRAPOD
Output Voltage	12V dc	13.8Vdc output for 12V devices	●	●	●
Input Voltage	110VAC		●	●	
	240VAC		●	●	
	PoE				●
Output Current	1A	Maximum rated load current	●	●	●
	2A	Maximum rated load current	●	●	●
	3A	Maximum rated load current	●	●	●
	4A	Maximum rated load current	●	●	
	5A	Maximum rated load current	●	●	
	8A	Maximum rated load current	●	●	
Features	SLA Battery Charging	On-board battery charging for emergency backup lead-acid batteries	●	●	●
	Lid Tamper	Signal to warn lid has been opened	●	●	●
	Wall Tamper	Signal to warn PSU has been removed from wall	●	●	
	Low battery warning	Signal when battery voltage becomes low	○	○	●
	Mains fail warning	Signal to warn mains power as been lost	○	○	●
	Battery deep discharge protection	Low battery cut-off, which prolongs the life of battery	○	○	●
	LED indication	Visual identificaiton on PSU lid	●	●	●
	Mounting Holes for Access controllers	Enables correct fitment of various access controllers	●	●	●
	12/24V switchable outputs	Output can be switched from 12V to 24V via manual switch	○	○	
	Multiple fused outputs (glass fuse) - options	Multiple fused outputs enable multiple devices to be powered, with glass fuse protetion	○		
	Multiple fused outputs (PTC fuse)	Multiple fused outputs enable multiple devices to be powered, with self-resetting fuse protection		●	
	Independant ancillary relay	A separate relay that can be used to signal or trigger independent events	○	○	
	Remote control of output/Fire Alarm interface	Enables a fire alarm signal to remotely operate the PSU output (on/off)		●	
	Lockable enclosure	Uses key and lock to secure enclosure lid	○	○	
	Steel enclosure (white)	Enclosure for PSU and battery is made from steel	●	●	●
Mounting options	DIN rail fixing / module only	Power module is able to fix to standard DIN rail for custom installations			○
	Lifetime Warranty	Standard warranty for Elmdene PSUs	●	●	
	Operating Temp -10 to +40oC	PSU will operate to full load within these temperatures	●	●	●
	CE/UKCA compliant	Minimal requirement for electronic products within UK and EU	●	●	●
	UL approved	UL approval needed for USA, South America and Middle East markets		UL294	
Product Standards	FCC compliant	EMC compliance for US market			●
	General Purpose				●
	Access Control		●	●	●
Typical Application	CCTV				●

● = Included / ○ = Optional



ACCESS-PSU RANGE



Switch Mode
Technology

Features

- 13.8V dc output
- Compact, single and multi-controller enclosures
- PCB mounts supplied for common controllers
- Mains fail fault output (excluding ACCESS-PSU-N)
- Tamper protection
- Switchable 12V / 24V dc versions available
- Universal 90 to 264V ac mains input range
- Bespoke models and branding available

**Some part numbers within this range may be subject to MOQs*



[Find out more](#)

Part No	Description	Max. Battery Size	Controller Options	Number of Controllers
ACCESS-PSU-N	13.8Vdc 2A N-Range SMPSU 275H x 330W x 80D (mm), 3.3kg	12V 17Ah	PAXTON; SALTO	1
ACCESS-PSU	13.8Vdc 2A BM SMPSU 275H x 330W x 80D (mm), 3.3kg	12V 7Ah	NEDAP; PAXTON; SALTO*; ADI HUB PRO; CDVI; HONEYWELL IB2 I/O	1
ACCESS-PSU1	13.8Vdc 4A BM SMPSU, 4-way Fused Output Module 380 H x 334 W x 85 D 4.0kg	12V 7Ah	NEDAP; PAXTON	2
			ADI HUB PRO; CDVI; HONEYWELL IB2 I/O	1
ACCESS-PSU2	13.8Vdc 4A BM SMPSU 4-way Fused Output Modules 500H x 400W x 80D (mm), 6.1kg	12V 17Ah	SALTO; ADI HUB PRO; HONEYWELL IB2 I/O HONEYWELL PRO22R2/ PRO32R2	2
			NEDAP; PAXTON*	4
ACCESS-PSU2-8A	13.8Vdc 8A / 27.6Vdc 4A Switchable SMPSU 4-way Fused Output Modules 500H x 400W x 80D (mm), 6.4kg	12V 17Ah	SALTO; ADI HUB PRO; HONEYWELL IB2 I/O HONEYWELL PRO22R2/ PRO32R2	2
			NEDAP; PAXTON*	4
MULTI-ACCESS-PSU2	13.8Vdc 8A / 27.6Vdc 4A Switchable SMPSU 8-way Fused Output Modules 515H x 478W x 146D (mm), 10.5kg	12V 17Ah	Please contact Elmdene for further information.	
ACCESS-EXP-PLATE	Single Expander Plate for the above (2 max)	12V 17Ah		
MULTI-ACCESS-PSU6	13.8Vdc 8A / 27.6Vdc 4A Switchable SMPSU 8-way Fused Output Modules 515H x 478W x 146D (mm), 11.5kg	12V 17Ah		

**Removal of "adaptor" plate required*



ACCESS-UL-PSU RANGE



Switch Mode
Technology



Designed for compatibility with most common access control door controllers, our UL294 certified access control PSU range offers incredible installation flexibility and time saving for system designers.

Enclosures are engineered to accommodate multiple door controllers for power integration within access control systems - for robust power management to ensure seamless operation.

Features

- Certified to UL294
- Compact, multi-controller enclosures
- PCB mounts for common controllers
- Unique enclosure design
- Front & rear enclosure tamper
- Mains Fail relay output
- Independent ancillary relay (8A version)
- Full rated current to load + 0.5A battery charging
- LED Fault indication

**Some part numbers within this range may be subject to MOQs*

[Find out more](#)



Part No	Description	Max. Battery Size	Controller Options	Qty
ACCESS-UL-PSU1	13.8Vdc 4A BM SMPSU 4-way Fused Output Modules, 440H x 250W x 115D (mm), 4.5kg	12V 7Ah	Mercury Security: EP2500; EP1502; EP4502; MR52; MR16IN; MR16OUT	1
			Mercury Security: EP1501; MR51e; MR50 ProWatch (Honeywell): PW6101	2
ACCESS-UL-PSU2	13.8Vdc 4A BM SMPSU 4-way Fused Output Modules, 505H x 407W x 80D (mm), 7.5kg	12V 17Ah	Mercury Security: EP2500; EP1502; EP4502; MR52; MR16IN; MR16OUT; MR50	2
			Mercury Security: EP1501; MR51e ProWatch (Honeywell): PW6101	4
MULTI-ACCESS-UL-PSU6	13.8Vdc 8A / 27.6Vdc 4A SMPSU, 8-way Fused Output Modules 515H x 478W x 146D (mm), 11.5kg	12V 17Ah	Mercury Security: EP2500; EP1502 ; EP4502 ; MR52 ; MR16IN ; MR16OUT	6
			Mercury Security: EP1501; MR51e; MR50 ProWatch (Honeywell): PW6101	12

If you're looking for more personalised advice, don't hesitate to reach out to one of our experts and we'll be happy to assist.

[Speak to one of our experts](#)

POE ULTRAPOD™



Features

- Converts PoE input to 12V dc output
- Provides 12V dc, up to 3A to the device with an additional 0.5A for battery charging (PoE++required)
- Offers battery back-up on loss of input PoE power
- Boxed unit has fixing points for commonly used access control boards
- Provides remote fault monitoring outputs:
 - PoE Input failure
 - Battery Low
- Data pass through for IP connections
- Powered remotely by:
 - PoE++ (PoE 802.3bt)
 - PoE+ (PoE 802.3at)
 - PoE (PoE 802.3af)

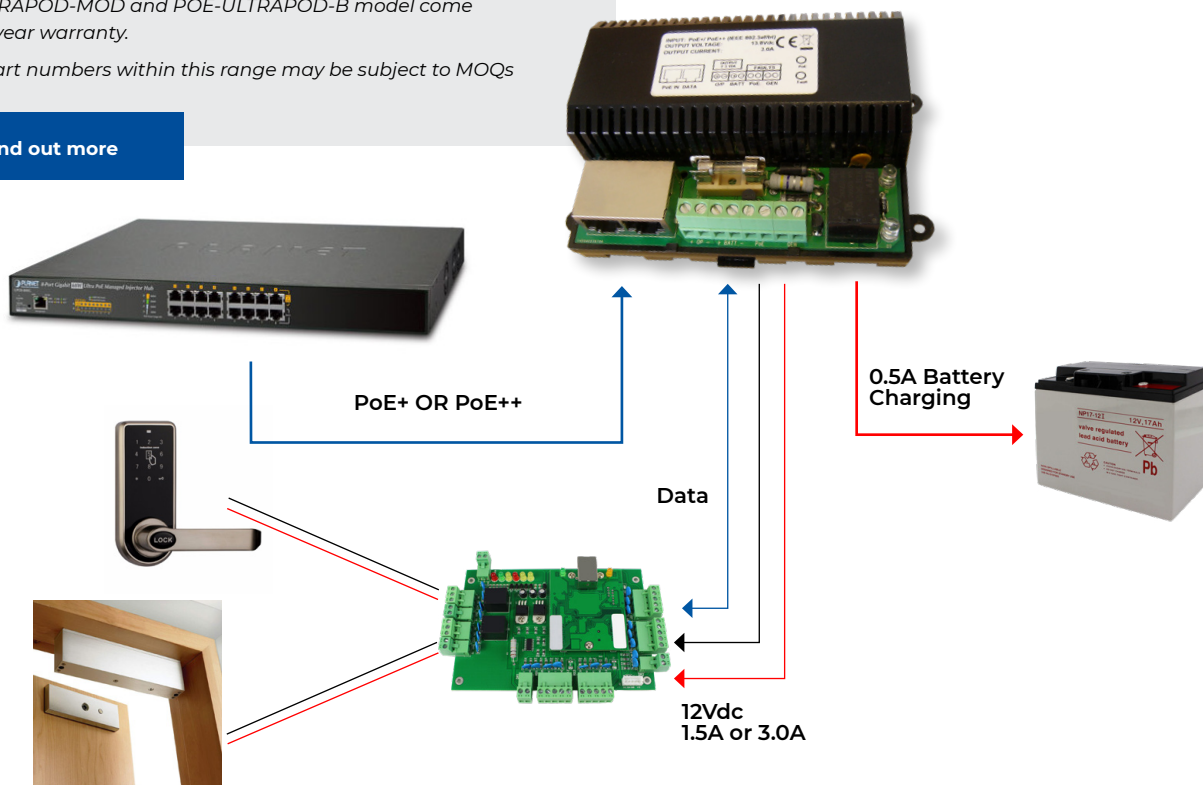
POE-ULTRAPOD-MOD and POE-ULTRAPOD-B model come with a 3 year warranty.

*Some part numbers within this range may be subject to MOQs

[Find out more](#)

PoE Accessories

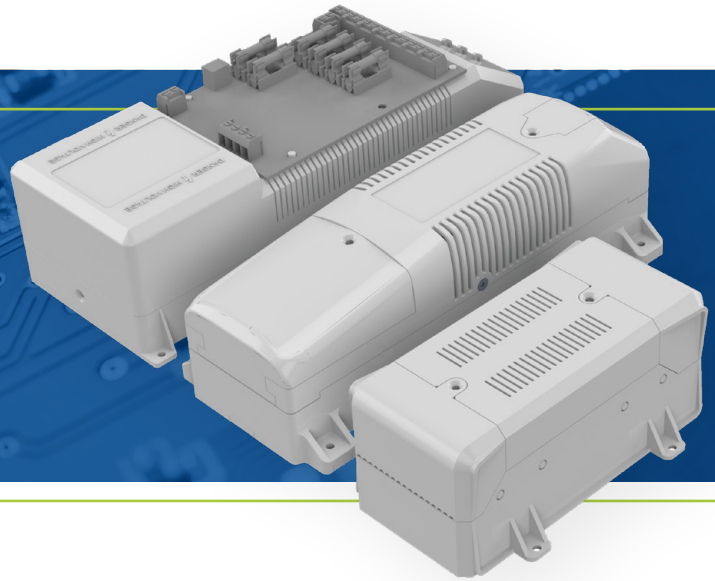
Part Number	Description
ELM-UPOE-SWITCH-8	8-Port Ultra PoE Ethernet Switch (Max 380W)
ELM-UPOE-INJ-8	8-Port Ultra PoE Injector Hub (Max 400W)
ELM-UPOE-INJ-16	16-Port Ultra PoE Injector Hub (Max 600W)
ELM-UPOE-INJ	Single port Ultra PoE Injector (Max 60W)
ELM-POE-INJ	Single port PoE Injector (Max 15W)
ELM-POE+INJ	Single port PoE Injector (Max 30W)



Part Number	Description	Dimensions
POE-ULTRAPOD-MOD	POE++ splitter DIN mountable module with battery charging and 12V 3A output	40 H x 125 W x 85 D
POE-ULTRAPOD-B	POE++ splitter with battery charging and 12V 3A output in a tampered metal enclosure capable of housing 1x access control board and 1x 12V 17Ah SLA battery	334 H x 380 W x 85 D

LITHIUM BATTERY POWER

COMING SOON!



12V PSUs with Internal Lithium Battery Back-up

Benefits of Lithium Power

- **Space Saving**
Compact design, reducing power supply and battery footprint by up to 50%
- **Longer Life**
10 year life expectancy, with no need to recharge every 6 months
- **High Performance**
Designed for higher temperature environments

[Find out more](#)

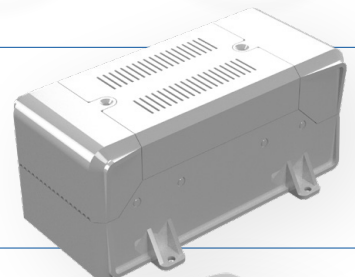
For more information,
get in touch with one of our
experts

[Get in touch](#)



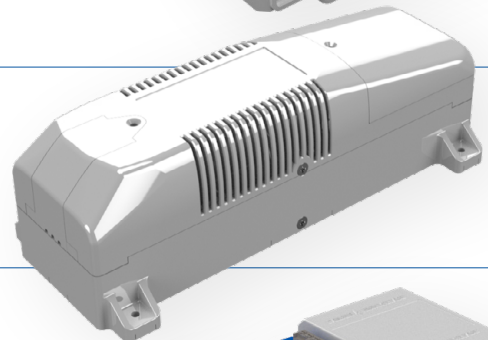
L12-01

13.8V dc **1A** SMPSU
LiFePO4 standby battery



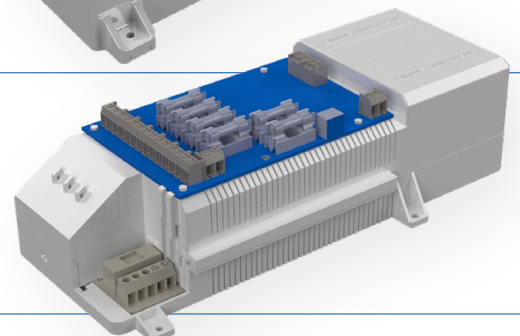
L12-03

13.8V dc **3A** SMPSU
LiFePO4 standby battery



L12-05

13.8V dc **5A** SMPSU
LiFePO4 standby battery



COMPLIANT PSUS FOR INTRUDER SYSTEMS



INTRUDER POWER SUPPLIES



			GEN range
Output Voltage	12V dc	13.8Vdc output for 12V devices	●
Input Voltage	110VAC		●
	240VAC		●
Output Current	1A	Maximum rated load current	●
	2A	Maximum rated load current	●
	3A	Maximum rated load current	●
Features	SLA Battery Charging	On-board battery charging for emergency backup lead-acid batteries	●
	Lid Tamper	Signal to warn lid has been opened	G2 G3
	Wall Tamper	Signal to warn PSU has been removed from wall	G3
	Low battery warning	Signal when battery voltage becomes low	●
	Mains fail warning	Signal to warn mains power as been lost	●
	PSU Fault warning	Signal to warn the PSU has an internal fault	●
	Battery Fault warning	Signal to warn the battery has a fault	●
	Battery deep discharge protection	Low battery cut-off, which prolongs the life of battery	●
Mounting options	Steel enclosure (white)	Enclosure for PSU and battery is made from steel	●
	DIN rail fixing / module only	Power module is able to fix to standard DIN rail for custom installations	●
	Lifetime Warranty	Standard warranty for Elmdene PSUs	●
	Operating Temp -10 to +40oC	PSU will operate to full load within these temperatures	●
Product Standards	CE/UKCA compliant	Minimal requirement for electronic products within UK and EU	●
	EN50131-6 Grade 2 approved	Mandatory requirement for Grade 2 intruder systems	●
	EN50131-6 Grade 3 approved	Mandatory requirement for Grade 3 intruder systems	○
	System Level 5 approved (FPC)	Extra approval for Factory (Spain market)	○
Typical Application	Intruder		●

● = Included / ○ = Optional / G2 = Grade 2 / G3 = Grade 3



12V GEN RANGE EN50131-6 APPROVED



Switch Mode
Technology

OVERVIEW

Specifically designed for Intruder system applications where compliance to EN50131-6 is required.



GRADE 2

System 5 Registration

GRADE 3

System 5 Registration

FEATURES

- Grade 2 and 3 compliant options
- Mains fail / battery fault monitoring / low output
- Range of battery and enclosure options
- Deep discharge battery protection
- EN50131-6 compliant

**Some part numbers within this range may be subject to MOQs*

[Find out more](#)

Part Number	Amp Rating	Dimensions	Will Fit Battery Size
GEN2-08-A	1.0	200 H x 230 W x 80 D	1 x 7 or 8Ah
GEN2-08-B		330 H x 355 W x 80 D	
GEN2-18-B	1.5	330 H x 355 W x 80 D	1 x 17 or 18Ah
GEN2-18-C		275 H x 330 W x 80 D	
GEN3-08-A	1.0	200 H x 230 W x 80 D	1 x 7 or 8Ah
GEN3-08-B		330 H x 355 W x 80 D	
GEN3-08-C		275 H x 330 W x 80 D	
GEN3-18-B	1.5	330 H x 355 W x 80 D	1 x 17 or 18Ah
GEN3-18-C		275 H x 330 W x 80 D	
GEN3-34-R*	3.0	410 H x 390 W x 86 D	2 x 12V 17Ah

**Meets the requirements of EN50131-6*



Approvals & Certification

GEN2 Compliant with EN50131-6:2017, Kiwa Certified

GEN3 Compliant with EN50131-6:2017, Kiwa Certified

PD6662:2017

ISO/IEC guide 67 System 5 Registration, Telefication (Kiwa) Certified - Continued Compliance

If you're looking for more personalised advice, don't hesitate to reach out to one of our experts and we'll be happy to assist.

[Speak to one of our experts](#)

POWER SUPPLIES

DIN RAIL



12V Ranges

G Range N Series

G13801NU, G13802NU, G13803NU,
G13804NU, G13804NU-4, G13805NU

PAGE 09

24V Ranges

G Range N Series

G2401NU, G2402NU

PAGE 11

G Range BM Series

G2401BMU, G2402BMU

PAGE 12

STX

(1A & 2A version)

PAGE 16

For Various Applications



OEM ENCLOSURES

MAKE YOUR PRODUCT STAND OUT!



CUSTOM DESIGNED ENCLOSURES

Elmdene now offer a bespoke OEM enclosure service. Our team are on hand to work with you on implementing a completely individual design for metal enclosure housings, to meet your needs and specifications.



From concept to production, Elmdene will support at every stage to ensure the enclosure meets the requirements of your product. Whether you need it to suit outdoor or indoor applications, wall-mounted or rack-mounted; our service will provide a solution that will help bring your product to market.

Elmdene can offer a **Cost Effective** solution and **Short Lead Times** - typically 6-8 weeks (from design sign-off to delivery).*

If you have a special requirement, please contact us to see how we can work together.

**MOQs apply and Lead Times are subject to project requirements*

WHY CHOOSE BESPOKE?

Designed to your specification

Our specialist design team will develop your enclosure to suit the requirements and application of your product, to any size, colour or shape.

Save money on development costs

Using our bespoke services will save time and money on developing a bespoke enclosure in-house and will free up your internal resources.



HAVE YOUR PRODUCTS BRANDED WITH YOUR OWN COMPANY LOGO



Elmdene offer a vinyl labelling or printing service for most PSUs and Sounders, giving your products a professional look to enhance your company's branding.

All branding is done in-house by our specialist technicians who have expertise in printing the most intricate of logos.

Please contact us to find out more about this service.*



BENEFITS OF BRANDING PRODUCTS WITH YOUR LOGO



BUILDS CUSTOMER RECOGNITION AND LOYALTY

Customers are more likely to choose a brand they recognise.



PROVIDES COMPETITIVE ADVANTAGE

Attracts attention of potential customers.



PREMIUM IMAGE

Projects an image of quality and reliability in your products.

**Subject to MOQs. Logo artwork to be supplied in compatible format.*

WE HOPE YOU GAINED SOME VALUABLE INSIGHT

WE LOOK FORWARD TO STAYING IN TOUCH!

To discover more about Elmdene, or any of our product ranges, get in touch with our team of experts who will be happy to talk about finding an ideal solution for your unique needs.

[Get in touch](#)

If you haven't downloaded our **Security & Fire Installations, Your Power Supply Guide** just yet - we highly recommend it.

[Download](#)

To stay up-to-date with our latest news and updates, follow us on social media, or visit our website.



a  POTTER company

www.elmdene.co.uk